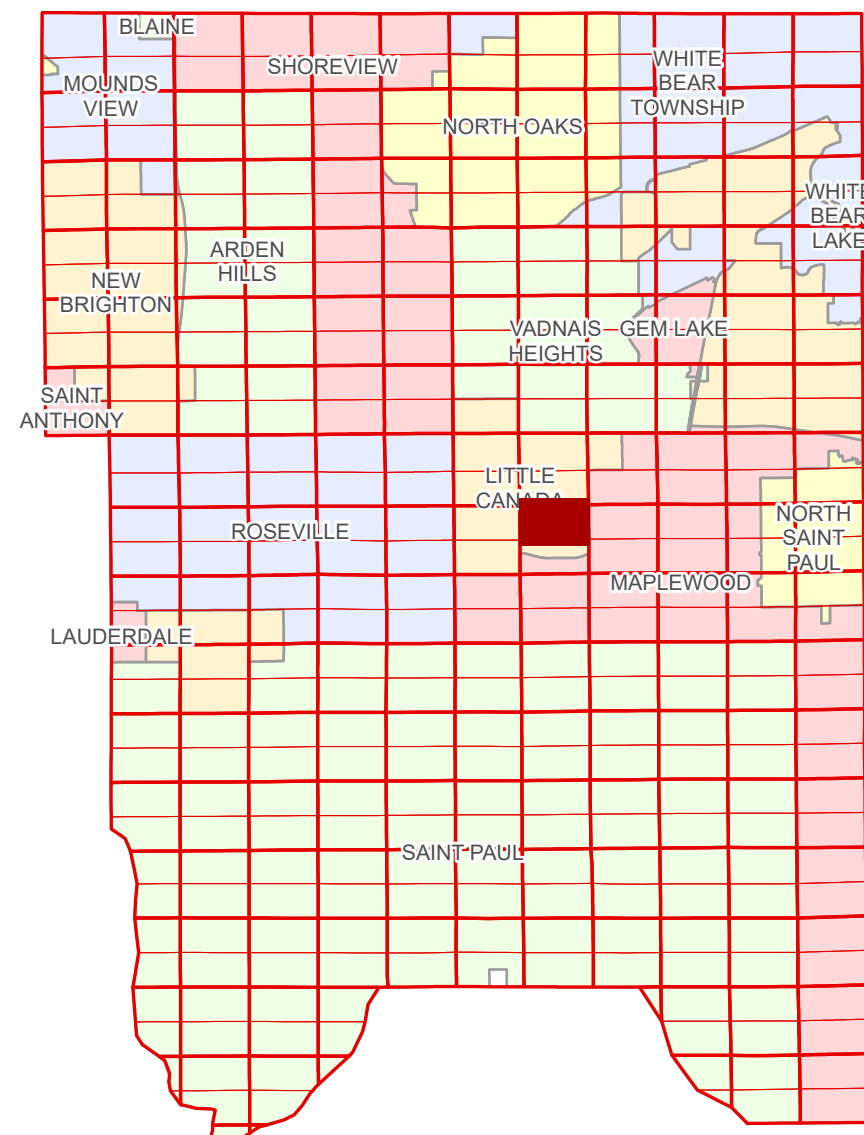


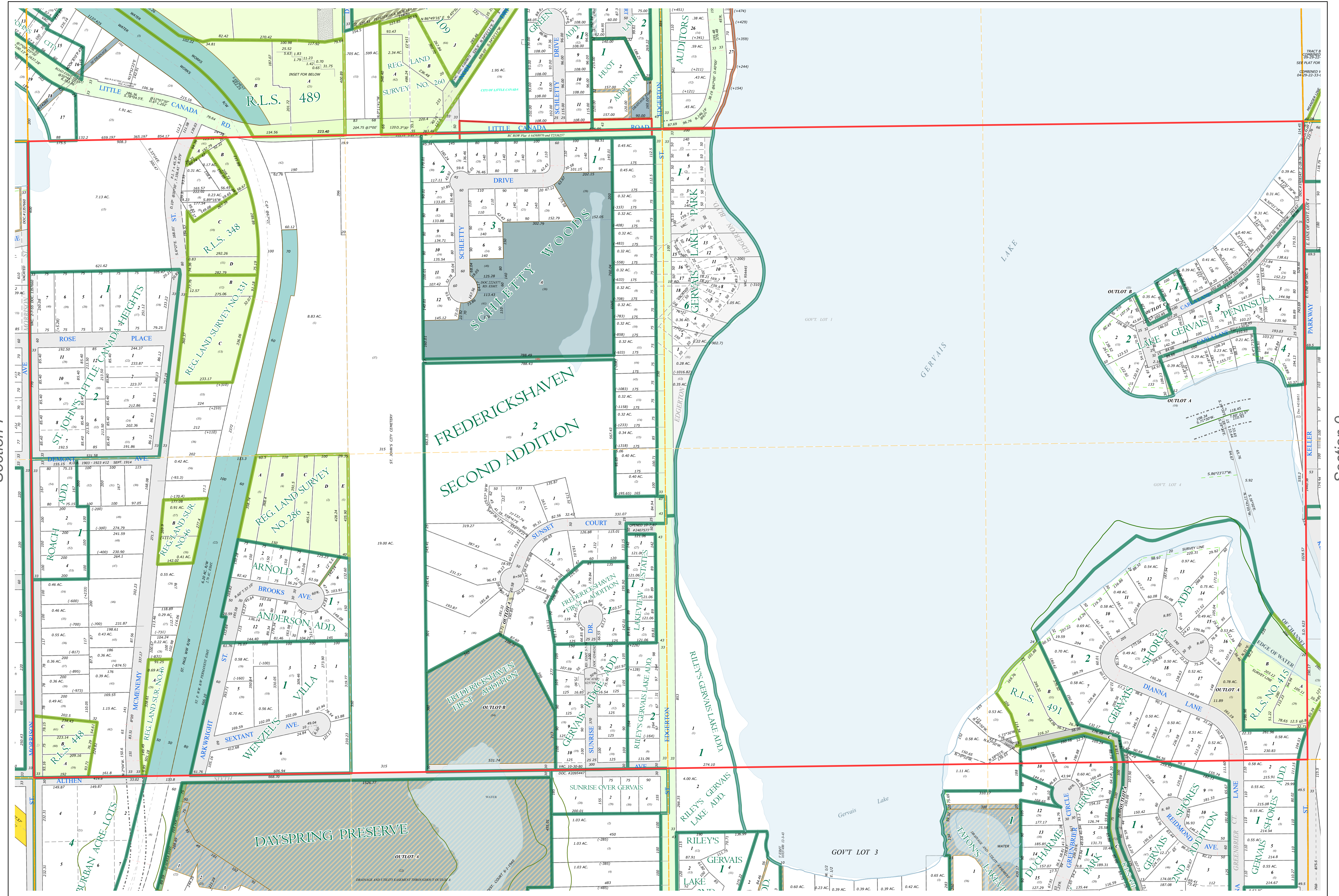
N Half
Section 8
T 29 N
R 22 W

Ramsey County Minnesota Parcel Map

Ramsey County
Section 5



Ramsey County
Section 7



Section 9
Ramsey County

Legend

Section	Metes & Bounds
Quarter	Tax Parcel Type
Quarter Quarter	Real Property
County Right of Way	Easement Type
Municipal Right of Way	Private Access
Subdivision Type	Private Driveway
Subdivision Plat	Utility, Storm & Sanitary Sewer
Registered Land Survey	Utility, Water
Auditors's Subdivision	Drainage & Utility
Highway RoW Plat	Drainage
Division Type	
Lot	
Outlot	
Tract	

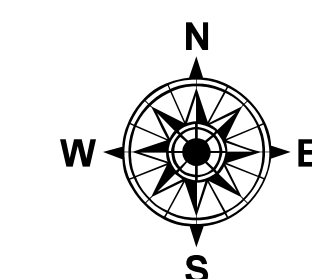
The information on this map is a compilation of Ramsey County Records. THE COUNTY DOES NOT WARRANT OR GUARANTEE THE ACCURACY OF THIS DATA. The County disclaims any liability for any injuries, time delays, or expenses you may suffer if you rely in any manner on the accuracy of this data.

NOTE: This is not an official Ramsey County tax lot map. This is based on the data available in the Geographic Information System, which may vary from tax data officially recorded in the Tax System. For an official tax map, please contact the Office of Property Records and Revenue.

Produced by Information Services Enterprise GIS Division
RCGISMetaData@Co.Ramsey.MN.US

651-266-2000
AskPropertyTaxandRecords@co.ramsey.mn.us

Section 8
Ramsey County



0 4590 180 270 360 Feet

1" = 200'

1:2,400

N082922

1/3/2025