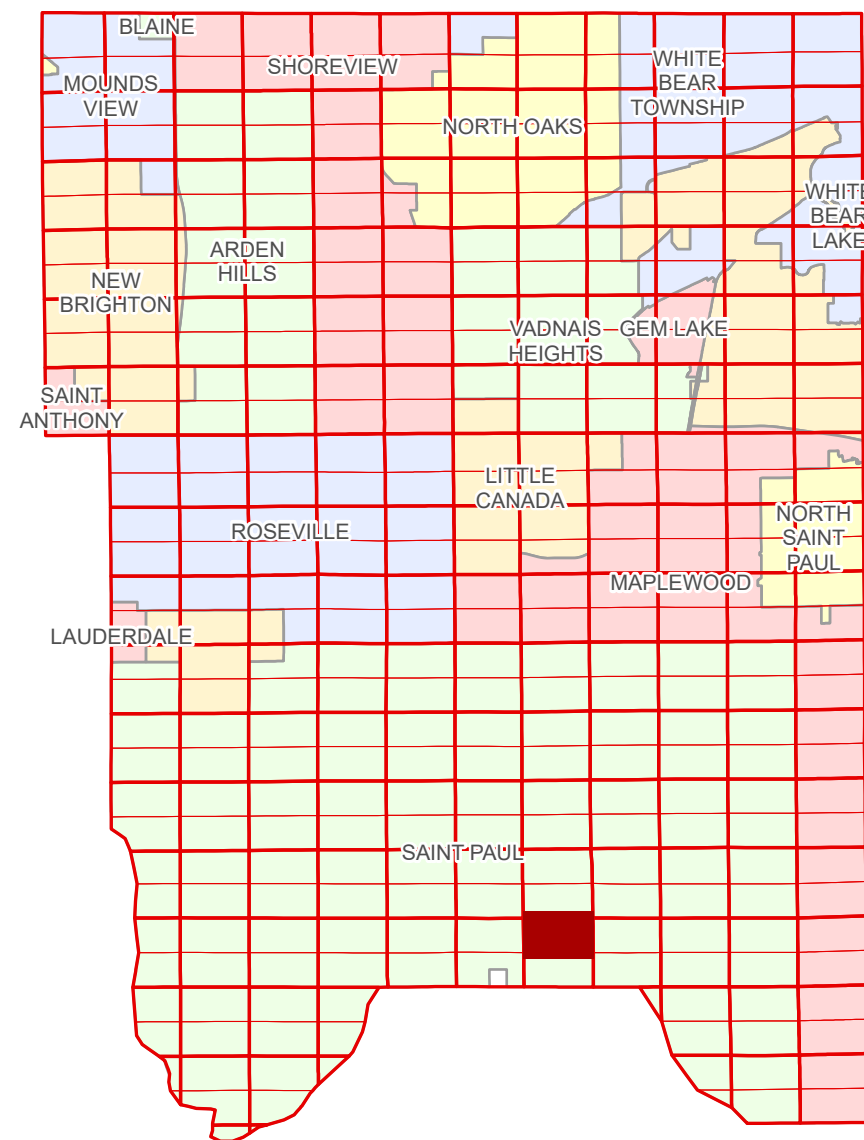


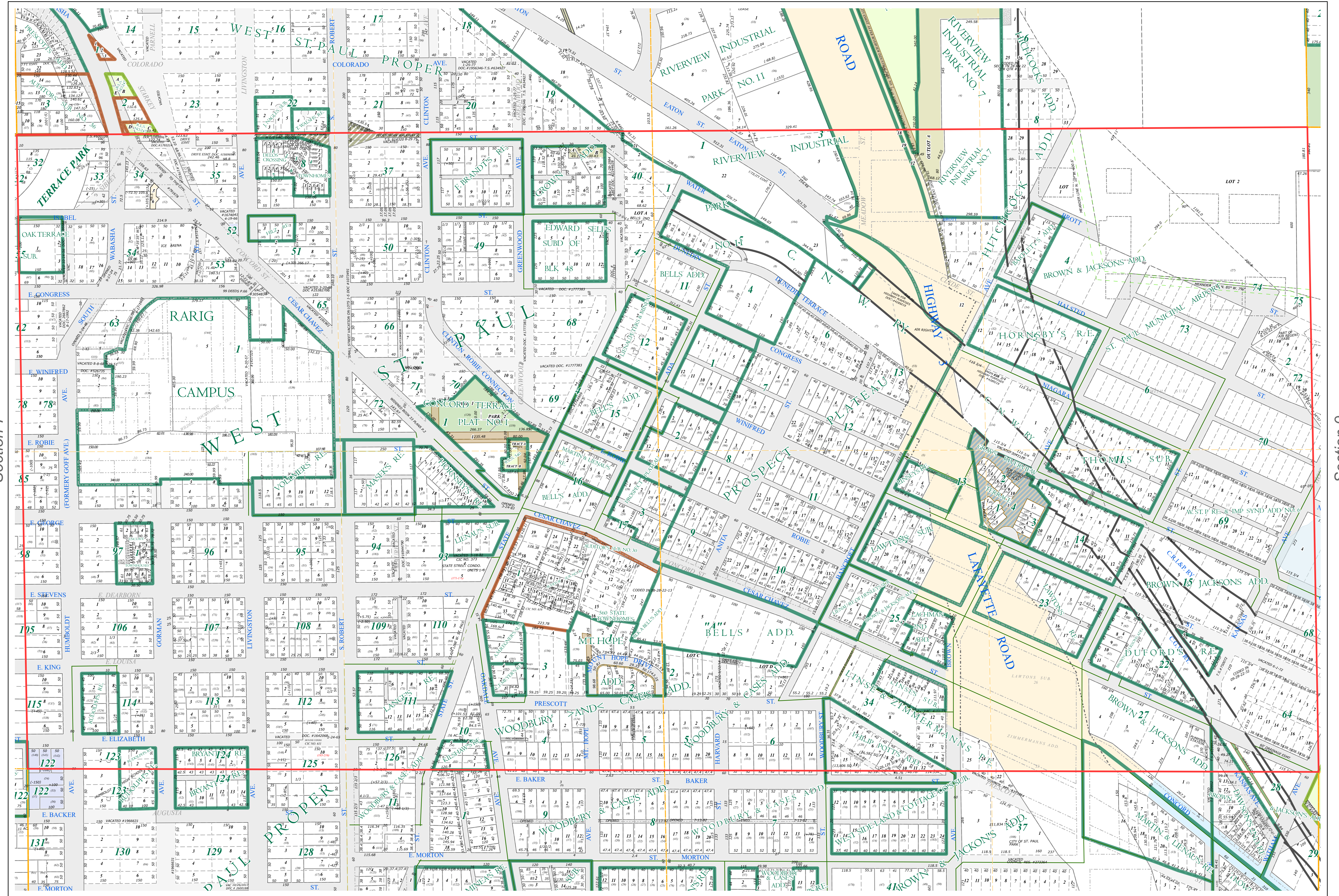
N Half
Section 8
T 28 N
R 22 W

Ramsey County Minnesota Parcel Map

Ramsey County
Section 5



Ramsey County
Section 7



Ramsey County
Section 9

Legend			
	Section		Metes & Bounds
	Quarter		Tax Parcel Type
	Quarter Quarter		Personal Property
	Federal Right of Way		State Assessed Property
	Municipal Right of Way		Real Property
	Subdivision Type		Easement Type
	Subdivision Plat		Pedestrian
	Registered Land Survey		Private Access
	Auditors's Subdivision		Private Driveway
	Division Type		Utility, Storm & Sanitary Sewer
	Lot		Utility, Unidentified
	Other		Drainage & Utility
	Outlot		Misc Easements
	Park		
	Tract		

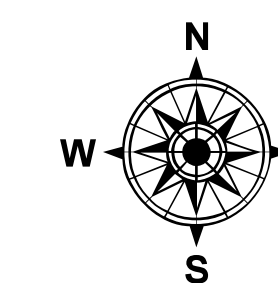
The information on this map is a compilation of Ramsey County Records. THE COUNTY DOES NOT WARRANT OR GUARANTEE THE ACCURACY OF THIS DATA. The County disclaims any liability for any injuries, time delays, or expenses you may suffer if you rely in any manner on the accuracy of this data.

Produced by Information Services Enterprise GIS Division
RCGSMetaData@Co.Ramsey.MN.US

NOTE: This is not an official Ramsey County tax lot map. This is based on the data available in the Geographic Information System, which may vary from tax data officially recorded in the Tax System. For an official tax map, please contact the Office of Property Records and Revenue.

651-266-2000
AskPropertyTaxandRecords@co.ramsey.mn.us

Section 8
Ramsey County



0 4590 180 270 360
Feet

1" = 200'

1:2,400

N082822

1/3/2025