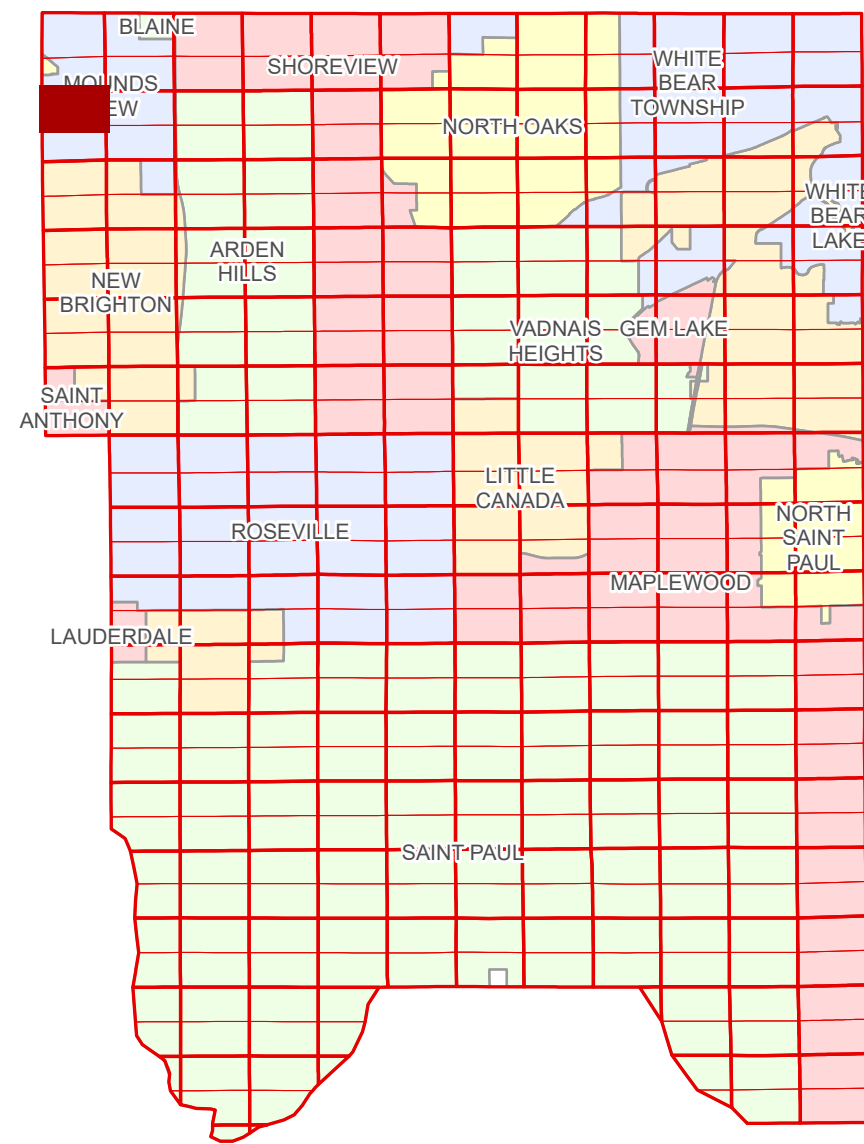


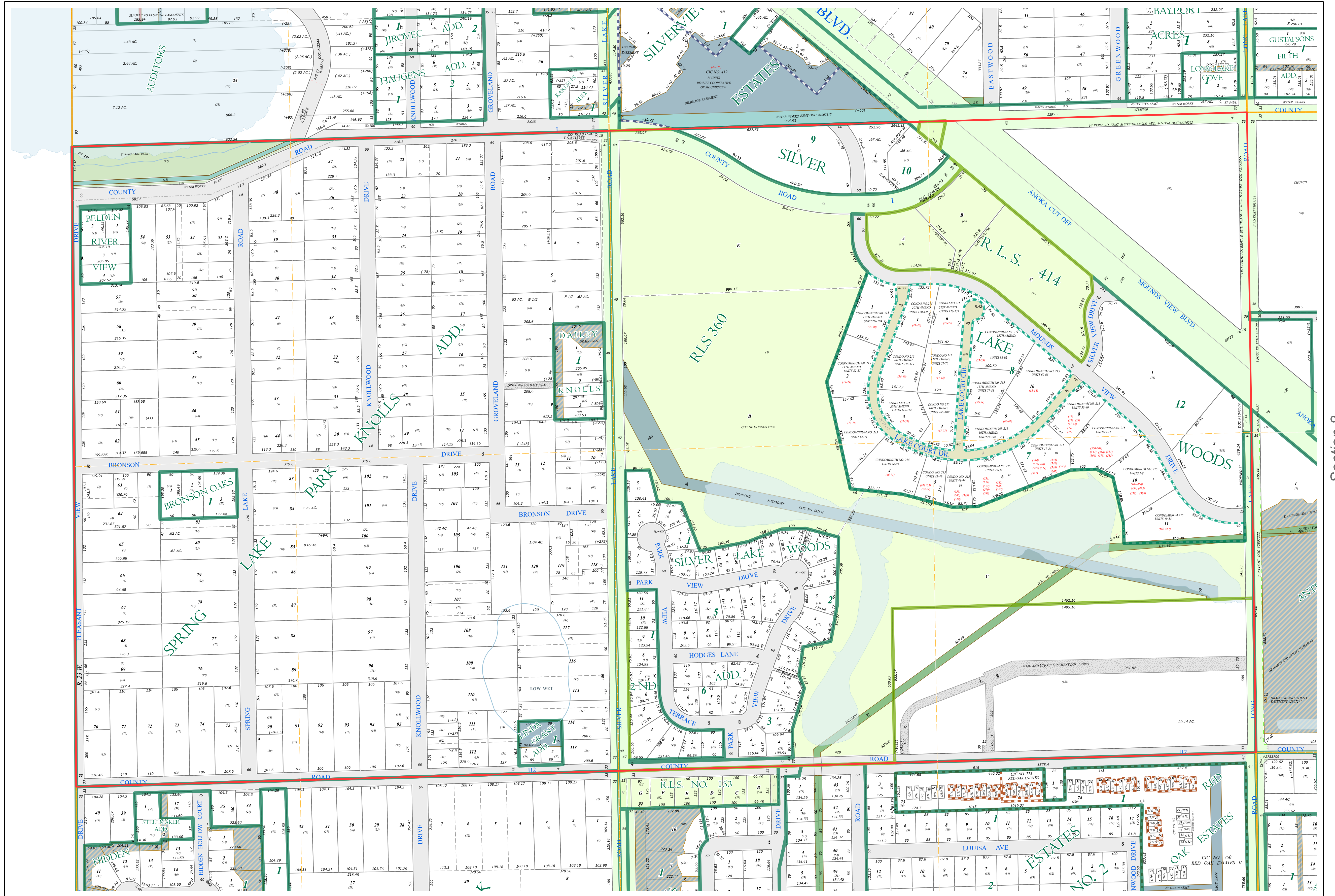
N Half
Section 7
T 30 N
R 23 W

Ramsey County Minnesota Parcel Map

Ramsey County
Section 6



Anoka County
Section 12



Section 8
Ramsey County

Legend

Section	Division Type
Quarter	Lot
Quarter Quarter	Outlot
County Right of Way	Park
Municipal Right of Way	Tract
Subdivision Type	Metes & Bounds
Subdivision Plat	Tax Parcel Type
Registered Land Survey	Real Property
Cooperative	Easement Type
Condominium	Utility, Storm & Sanitary Sewer
	Utility, Water
	Drainage & Utility
	Drainage
	Misc Easements

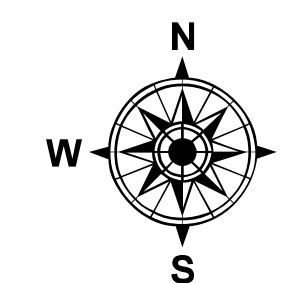
The information on this map is a compilation of Ramsey County Records. THE COUNTY DOES NOT WARRANT OR GUARANTEE THE ACCURACY OF THIS DATA. THE County disclaims any liability for any injuries, time delays, or expenses you may suffer if you rely in any manner on the accuracy of this data.

Produced by Information Services Enterprise GIS Division
RCGSMetaData@Co.Ramsey.MN.US

NOTE: This is not an official Ramsey County tax lot map. This is based on the data available in the Geographic Information System, which may vary from tax data officially recorded in the Tax System. For an official tax map, please contact the Office of Property Records and Revenue.

651-266-2000
AskPropertyTaxandRecords@co.ramsey.mn.us

Section 7
Ramsey County



0 4590 180 270 360 Feet
1" = 200'
1:2,400

N073023

1/3/2025