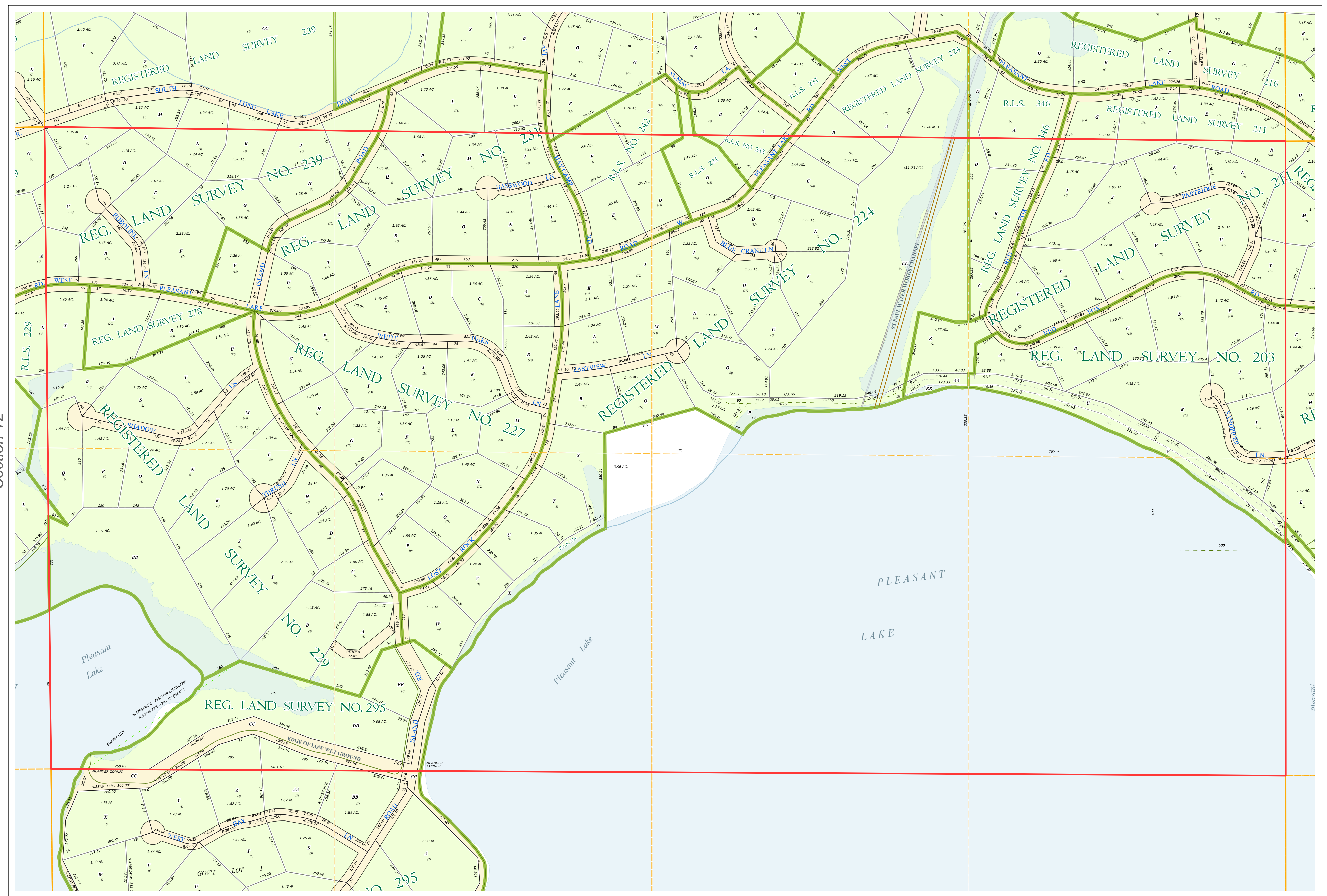
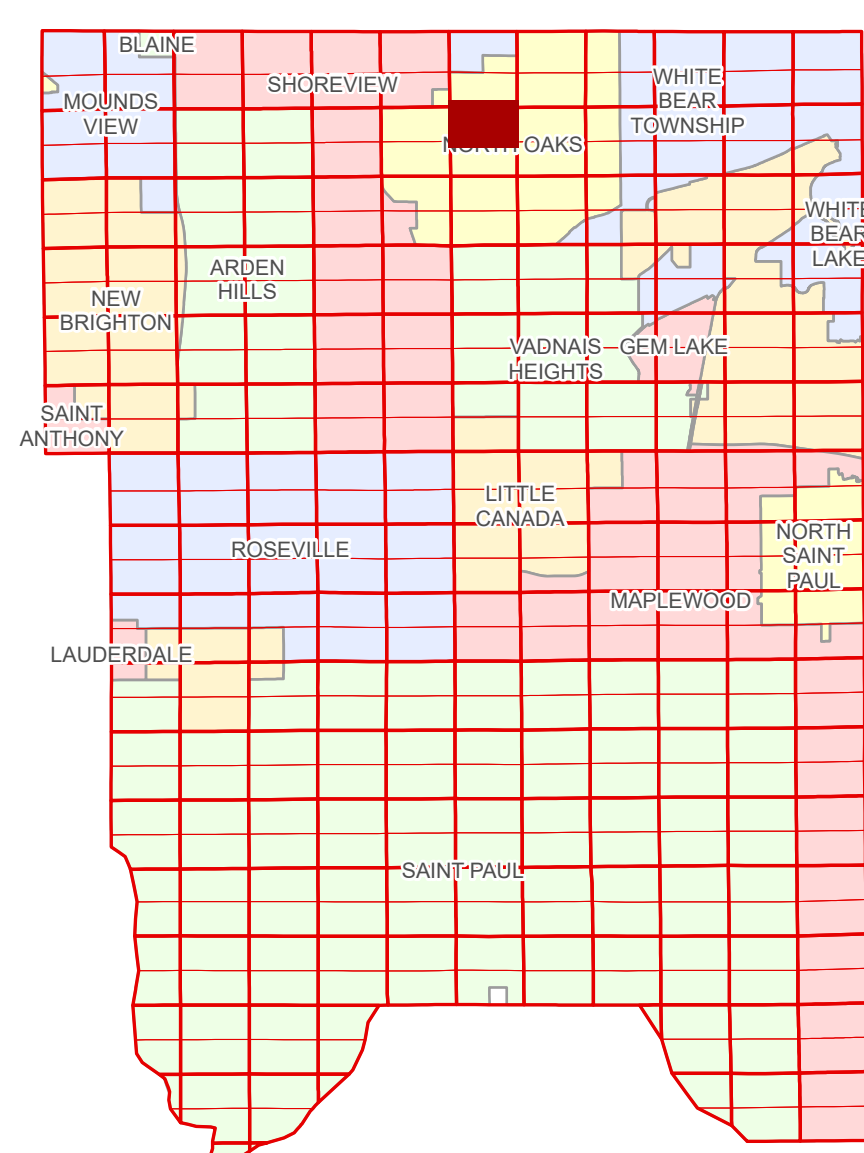


# Ramsey County Minnesota Parcel Map

N Half  
Section 7  
T 30 N  
R 22 W

Ramsey County  
Section 6



Ramsey County  
Section 12

Section 8  
Ramsey County

**Legend**

Section	Metes & Bounds
Quarter	Tax Parcel Type
Quarter Quarter	Real Property
Subdivision Type	Easement Type
Registered Land Survey	Private Access
Division Type	Misc Easements
Tract	

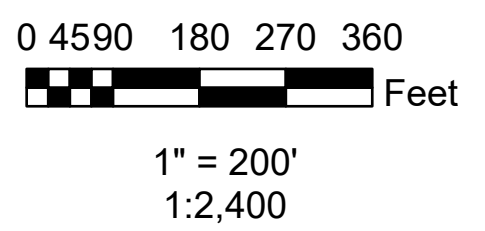
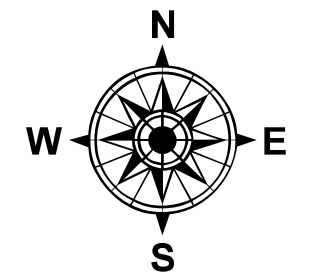
The information on this map is a compilation of Ramsey County Records. THE COUNTY DOES NOT WARRANT OR GUARANTEE THE ACCURACY OF THIS DATA. The County disclaims any liability for any injuries, time delays, or expenses you may suffer if you rely in any manner on the accuracy of this data.

Produced by Information Services Enterprise GIS Division  
RCGSMetaData@Co.Ramsey.MN.US

NOTE: This is not an official Ramsey County tax lot map. This is based on the data available in the Geographic Information System, which may vary from tax data officially recorded in the Tax System. For an official tax map, please contact the Office of Property Records and Revenue.

651-266-2000  
AskPropertyTaxandRecords@co.ramsey.mn.us

Section 7  
Ramsey County



N073022  
1/3/2025