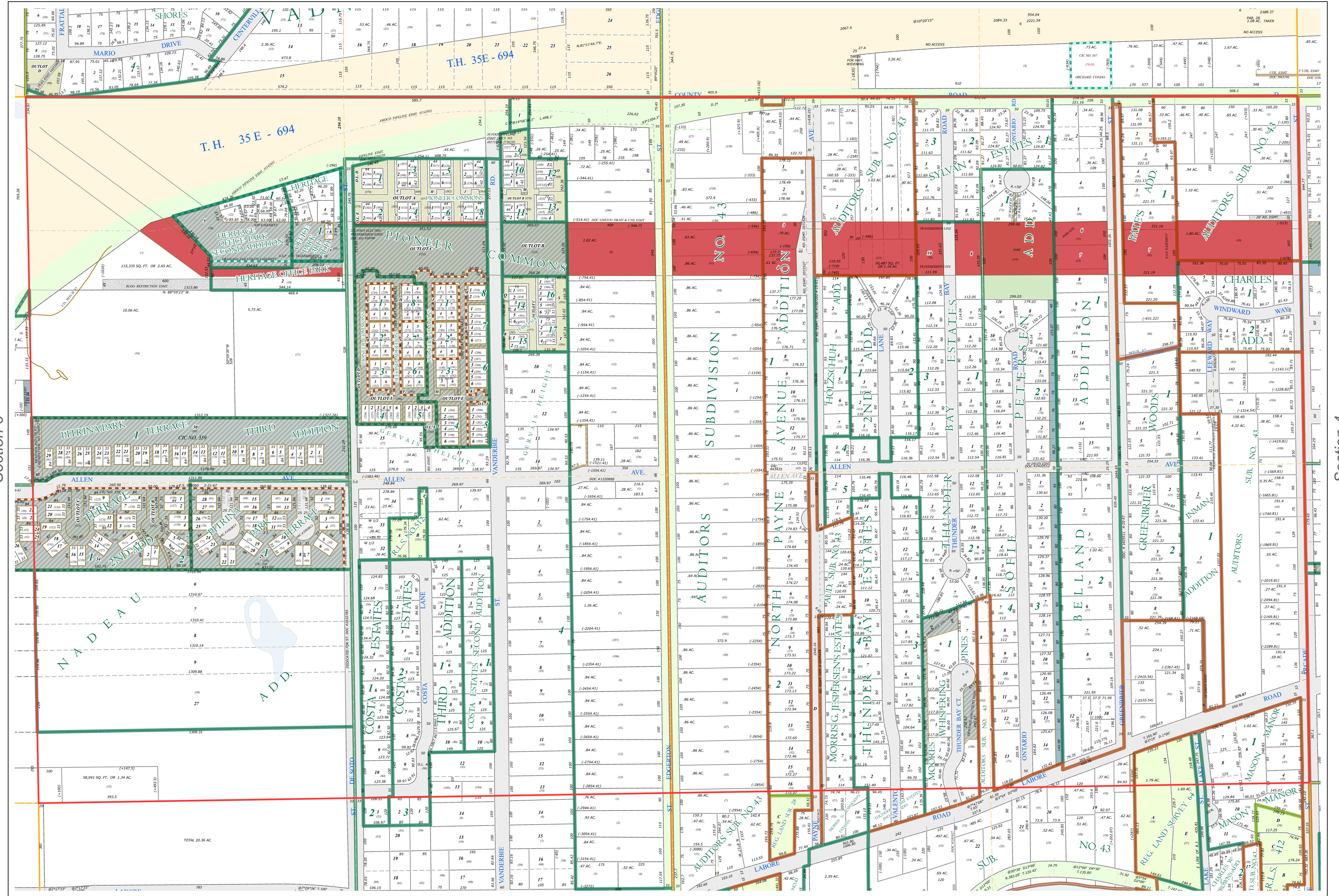
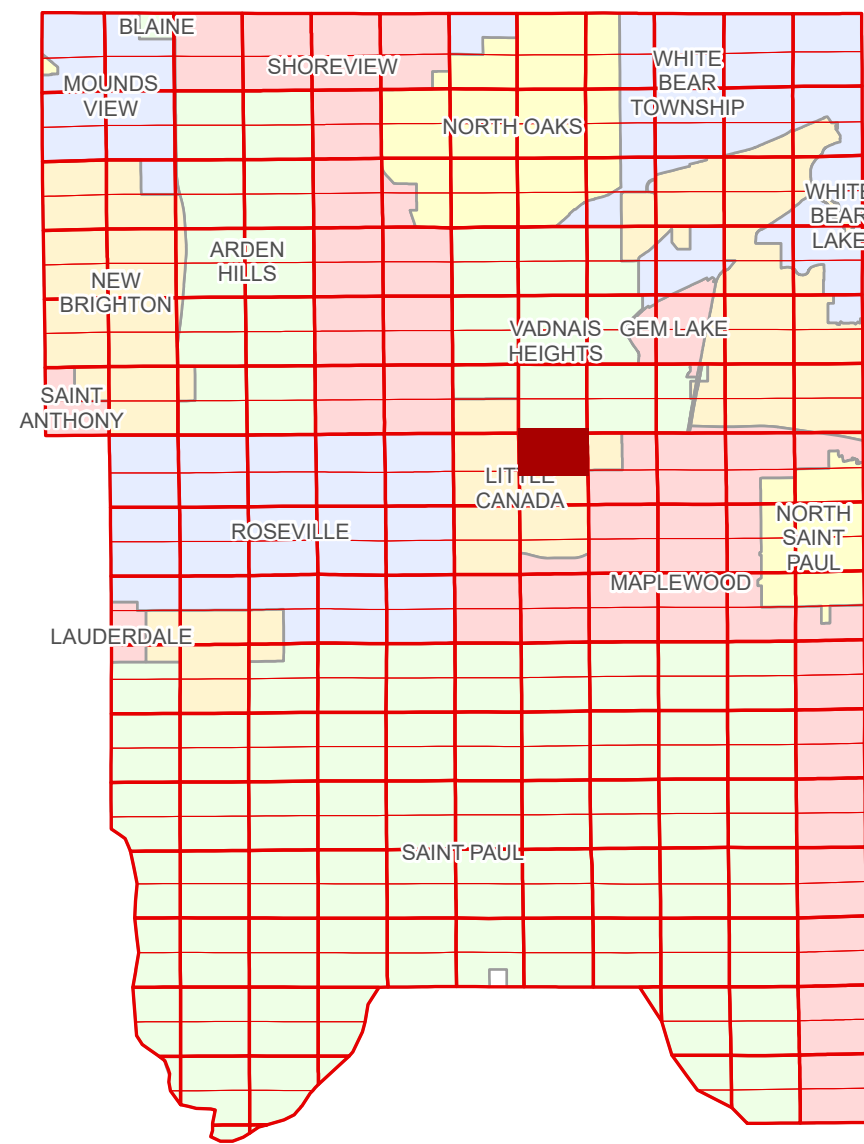


N Half
Section 5
T 29 N
R 22 W

Ramsey County Minnesota Parcel Map

Ramsey County
Section 32



Ramsey County
Section 4

Legend

Section	Metes & Bounds
Quarter	Tax Parcel Type
Quarter Quarter	Real Property
Federal Right of Way	Easement Type
County Right of Way	Ditch, County & Judicial
Municipal Right of Way	Pedestrian
Subdivision Type	Private Access
Subdivision Plat	Private Driveway
Registered Land Survey	Utility, Electric
Auditor's Subdivision	Utility, Unidentified
Planned Community	Drainage & Utility
Condominium	Drainage
Division Type	Misc Easements
Lot	
Outlot	
Park	
Tract	

The information on this map is a compilation of Ramsey County Records. THE COUNTY DOES NOT WARRANT OR GUARANTEE THE ACCURACY OF THIS DATA. The County disclaims any liability for any injuries, time delays, or expenses you may suffer if you rely in any manner on the accuracy of this data.

NOTE: This is not an official Ramsey County tax lot map. This is based on the data available in the Geographic Information System, which may vary from tax data officially recorded in the Tax System. For an official tax map, please contact the Office of Property Records and Revenue.

Produced by Information Services Enterprise GIS Division
RCGISMetaData@Co.Ramsey.MN.US

651-266-2000
AskPropertyTaxandRecords@co.ramsey.mn.us

Section 5
Ramsey County



North arrow pointing up.

Scale bar: 0 4590 180 270 360 Feet

1" = 200'
1:2,400

N052922
1/3/2025