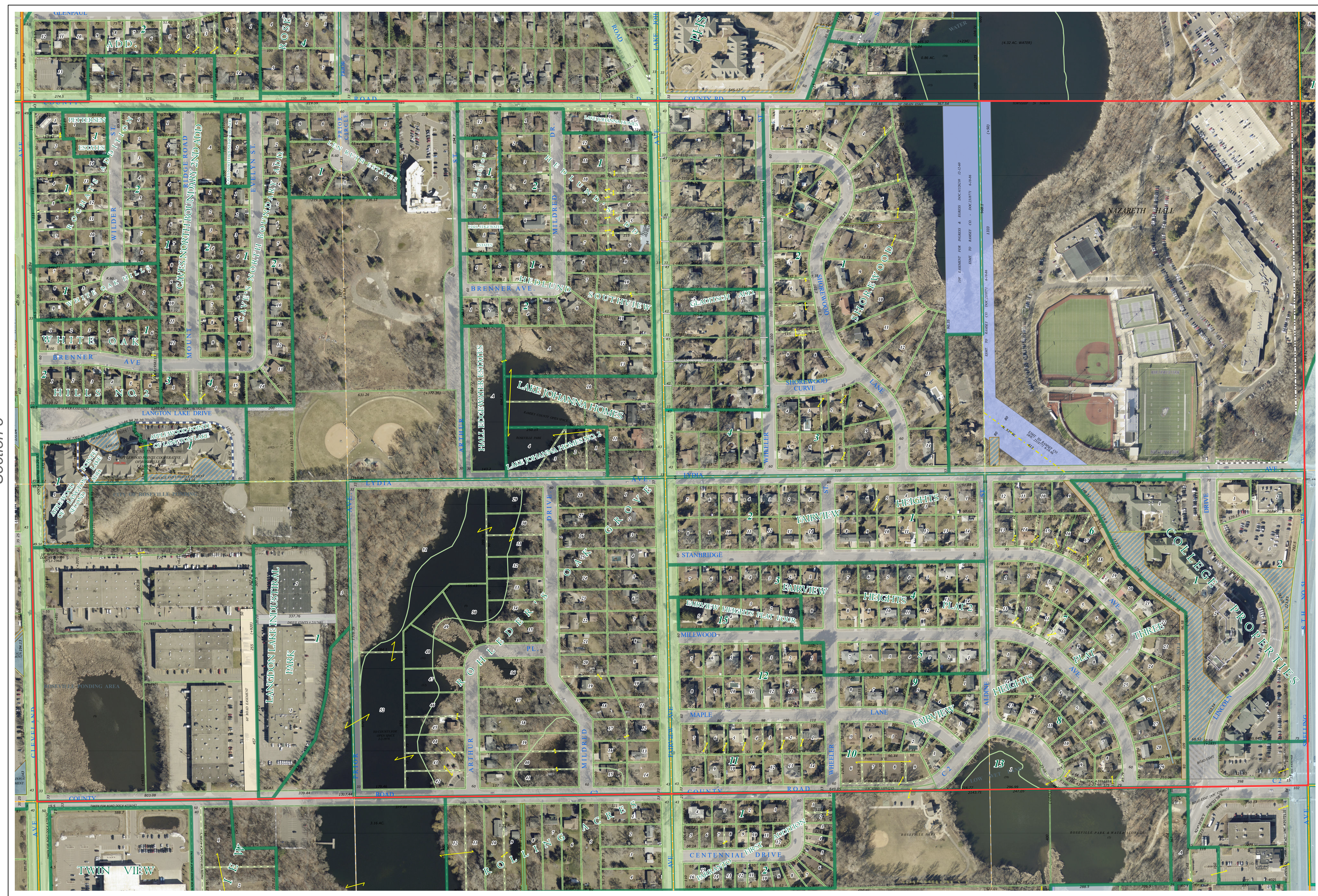
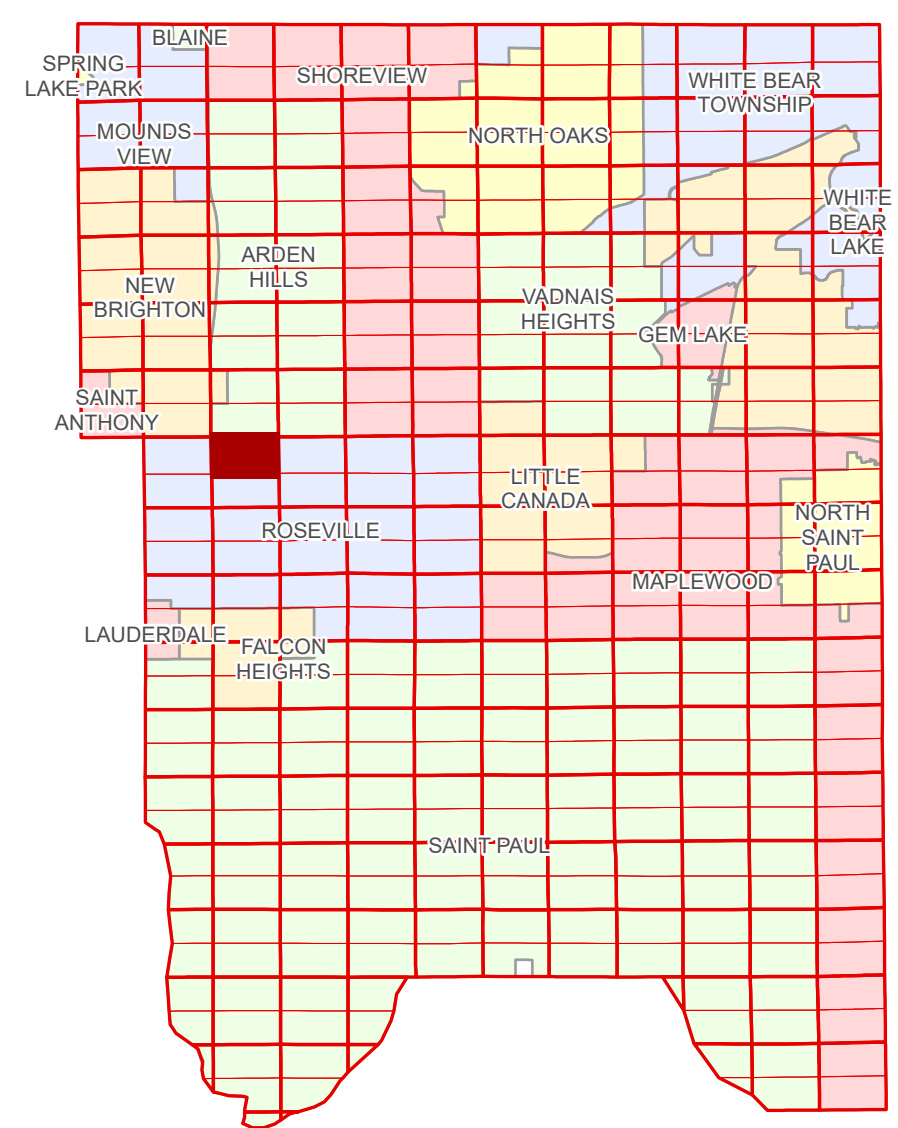


Ramsey County Minnesota Parcel Map

N Half
Section 4
T 29 N
R 23 W

Ramsey County
Section 33



Ramsey County
Section 5

Section 3
Ramsey County

| Legend | |
|--------|---|
| | Section |
| | Quarter |
| | Quarter Quarter |
| | State Right of Way |
| | County Right of Way |
| | Municipal Right of Way |
| | Subdivision Plat |
| | Cooperative |
| | Division Type |
| | Lot |
| | Metes & Bounds |
| | Tax Parcel Type Real Property |
| | Easement Type Ditch, County & Judicial |
| | Ponding |
| | Private Access |
| | Private Driveway |
| | Public Right of Way |
| | Utility, Unidentified |
| | Drainage & Utility |
| | Drainage |
| | Misc Easements |

Aerial Imagery Date: March 11 - April 4, 2024



The information on this map is a compilation of Ramsey County Records. THE COUNTY DOES NOT WARRANT OR GUARANTEE THE ACCURACY OF THIS DATA. The County disclaims any liability for any injuries, time delays, or expenses you may suffer if you rely in any manner on the accuracy of this data.

NOTE: This is not an official Ramsey County tax lot map. This is based on the data available in the Geographic Information System, which may vary from tax data officially recorded in the Tax System. For an official tax map, please contact the Office of Property Records and Revenue.

Produced by Information Services Enterprise GIS Division
RCGISMetaData@Co.Ramsey.MN.US

651-266-2000
AskPropertyTaxandRecords@co.ramsey.mn.us

Section 4
Ramsey County



N042923

1/3/2025