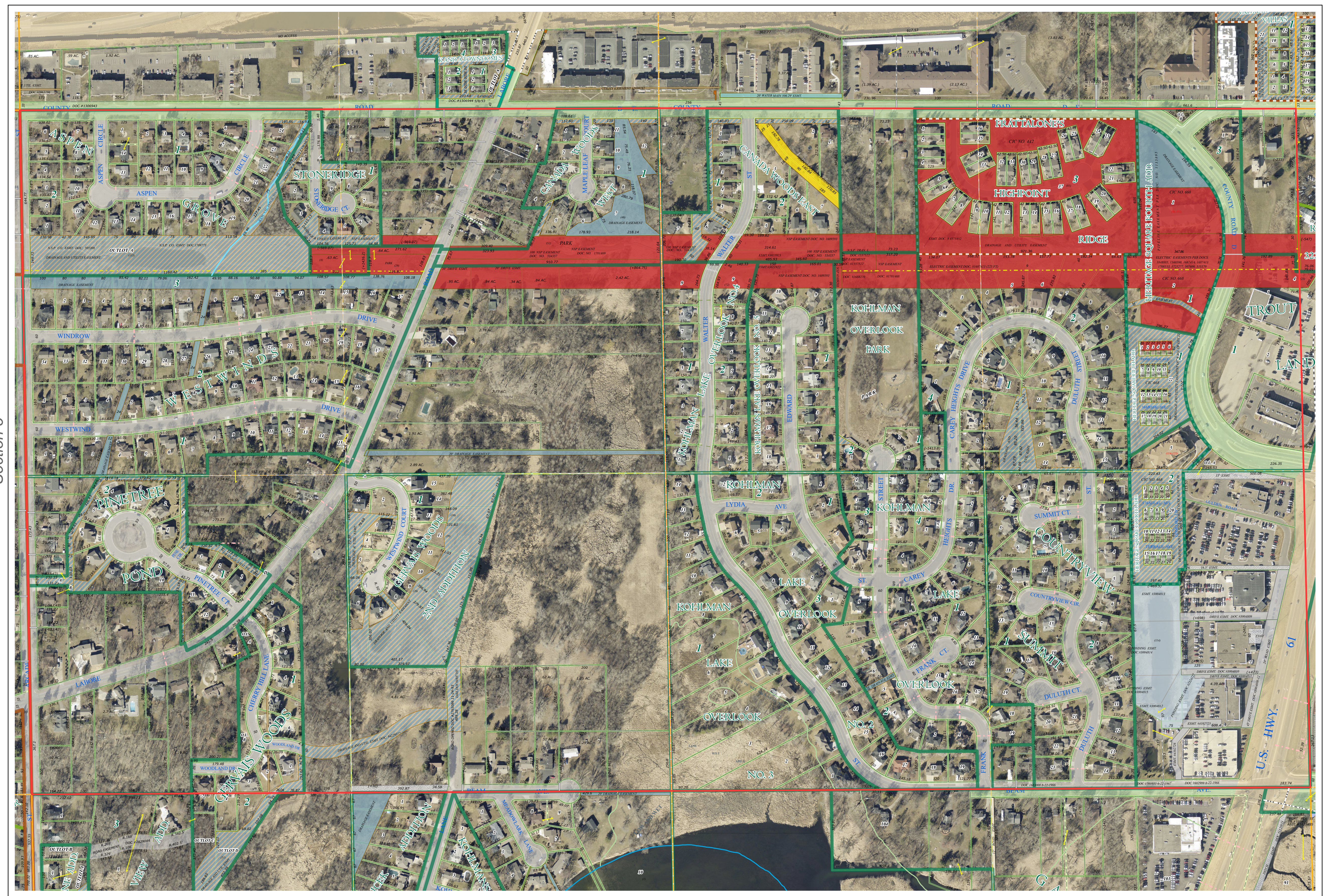
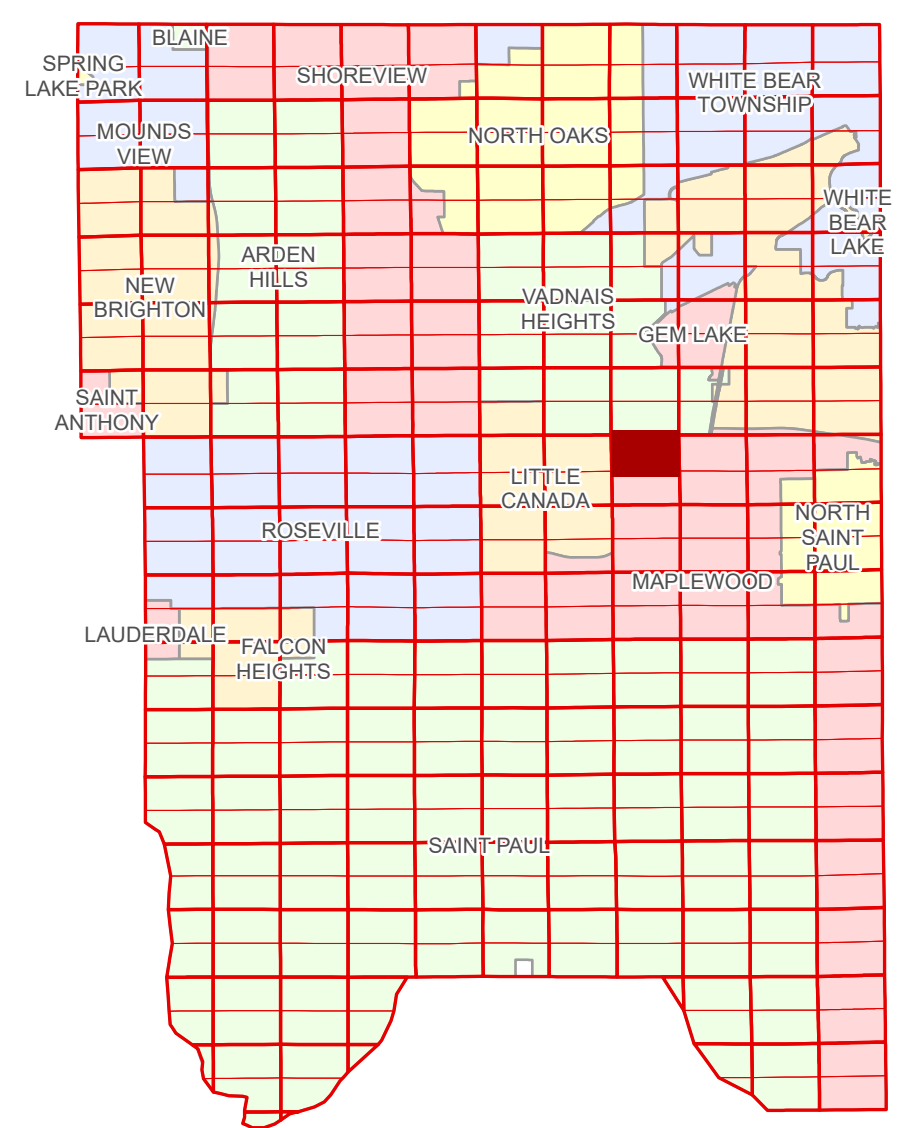


# Ramsey County Minnesota Parcel Map

Ramsey County  
Section 33

N Half  
Section 4  
T 29 N  
R 22 W



Ramsey County  
Section 5

Section 3  
Ramsey County

Legend	
	Metes & Bounds
	<b>Tax Parcel Type</b>
	Real Property
	<b>Easement Type</b>
	Ponding
	Pedestrian
<b>Subdivision Type</b>	Private Driveway
	Utility, Electric
	Utility, Gas & Oil
	Utility, Unidentified
	Drainage & Utility
<b>Division Type</b>	Drainage
	Misc Easements

Aerial Imagery Date: March 11 - April 4, 2024



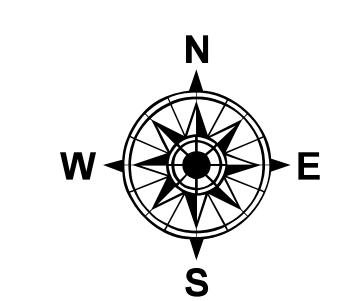
The information on this map is a compilation of Ramsey County Records. THE COUNTY DOES NOT WARRANT OR GUARANTEE THE ACCURACY OF THIS DATA. The County disclaims any liability for any injuries, time delays, or expenses you may suffer if you rely in any manner on the accuracy of this data.

Produced by Information Services Enterprise GIS Division  
RCGISMetaData@Co.Ramsey.MN.US

NOTE: This is not an official Ramsey County tax lot map. This is based on the data available in the Geographic Information System, which may vary from tax data officially recorded in the Tax System. For an official tax map, please contact the Office of Property Records and Revenue.

651-266-2000  
AskPropertyTaxandRecords@co.ramsey.mn.us

Section 4  
Ramsey County



0 450 180 270 360 Feet  
1" = 200'  
1:2,400

N042922

1/3/2025