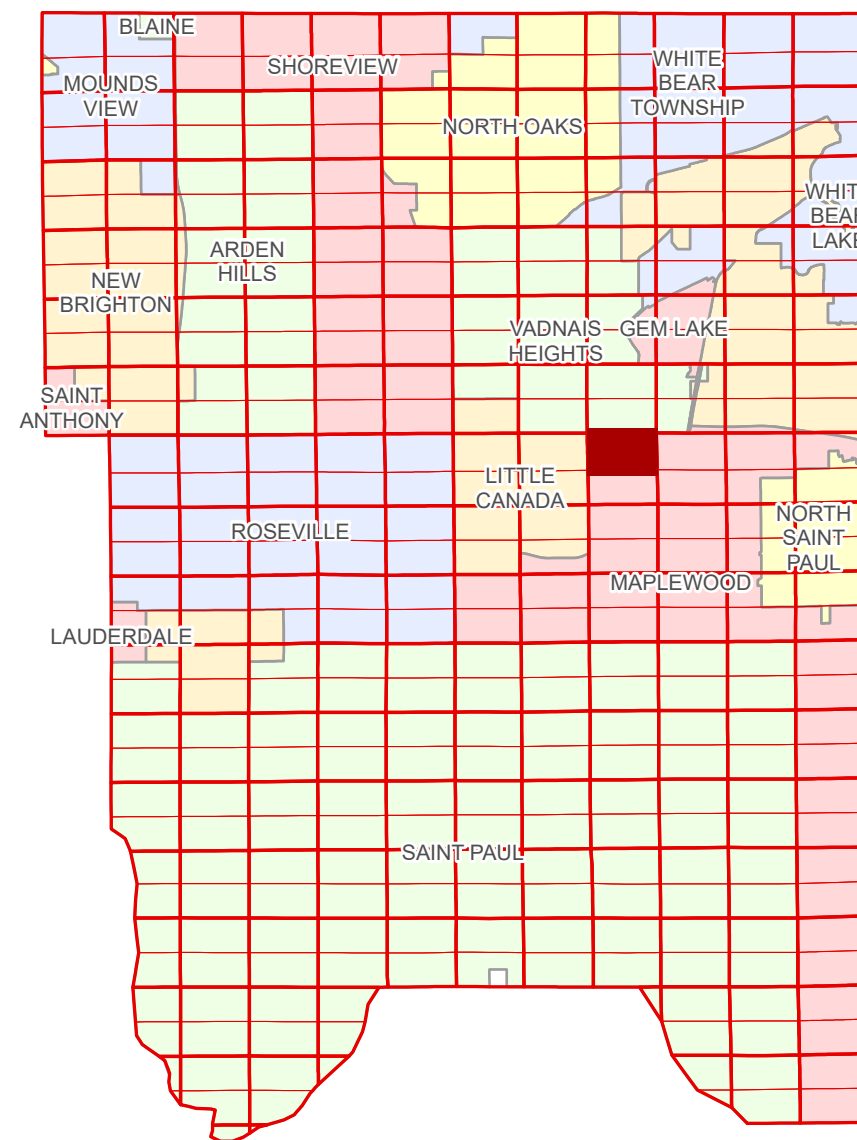


N Half  
Section 4  
T 29 N  
R 22 W

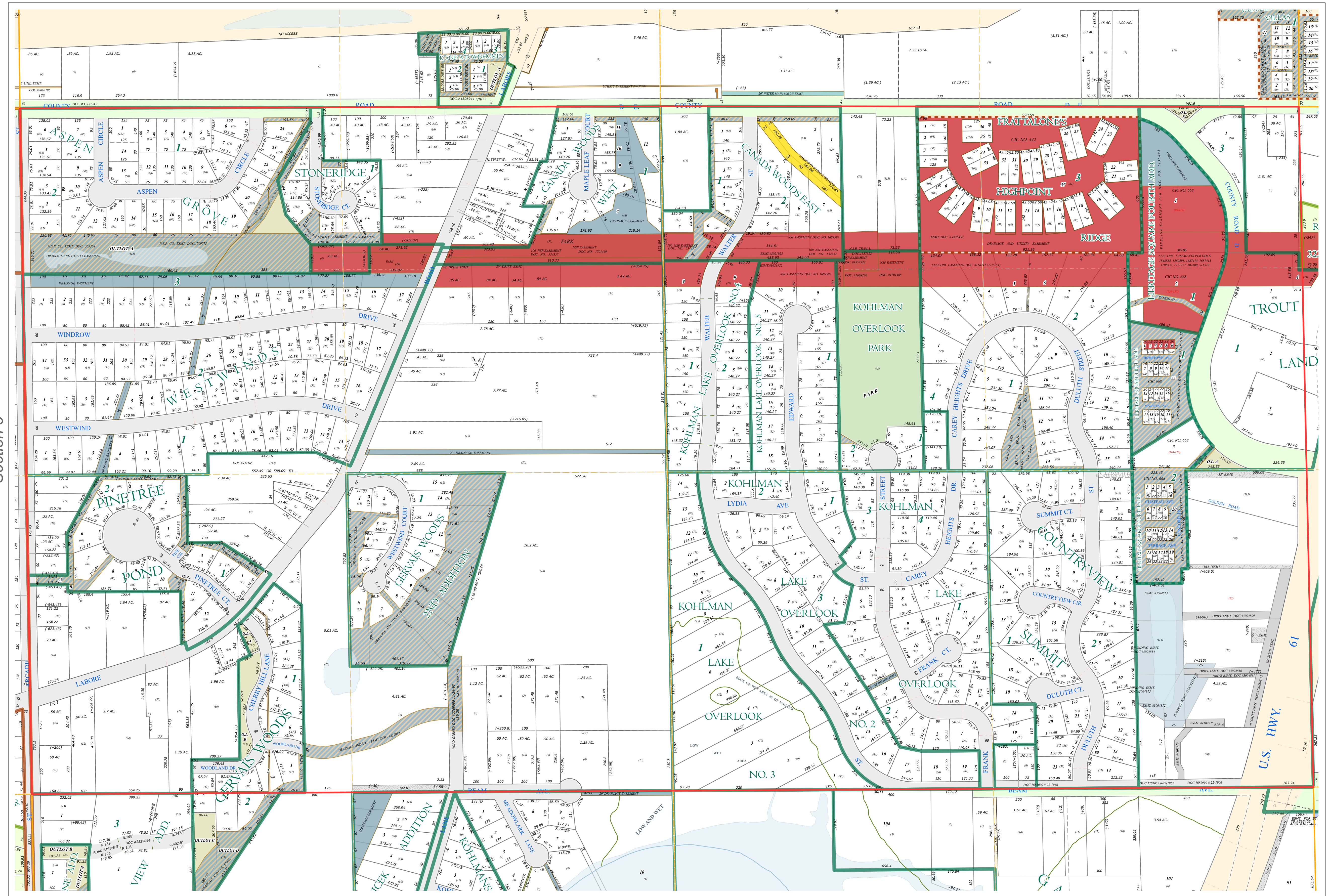
# Ramsey County Minnesota Parcel Map

Ramsey County  
Section 33



Ramsey County  
Section 5

Ramsey County  
Section 3



**Legend**

Section	Metes & Bounds
Quarter	Tax Parcel Type
Quarter Quarter	Real Property
Federal Right of Way	<b>Easement Type</b>
County Right of Way	Ponding
Municipal Right of Way	Pedestrian
<b>Subdivision Type</b>	Private Driveway
Subdivision Plat	Utility, Electric
Registered Land Survey	Utility, Gas & Oil
Planned Community	Utility, Unidentified
Condominium	Drainage & Utility
<b>Division Type</b>	Drainage
Lot	Misc Easements
Outlot	
Park	
Tract	

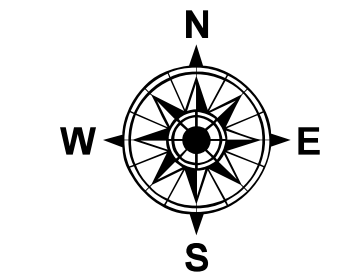
The information on this map is a compilation of Ramsey County Records. THE COUNTY DOES NOT WARRANT OR GUARANTEE THE ACCURACY OF THIS DATA. The County disclaims any liability for any injuries, time delays, or expenses you may suffer if you rely in any manner on the accuracy of this data.

Produced by Information Services Enterprise GIS Division  
RCGSMetaData@Co.Ramsey.MN.US

NOTE: This is not an official Ramsey County tax lot map. This is based on the data available in the Geographic Information System, which may vary from tax data officially recorded in the Tax System. For an official tax map, please contact the Office of Property Records and Revenue.

651-266-2000  
AskPropertyTaxandRecords@co.ramsey.mn.us

Section 4  
Ramsey County



0 450 180 270 360 Feet  
1" = 200'  
1:2,400

N042922  
1/3/2025

