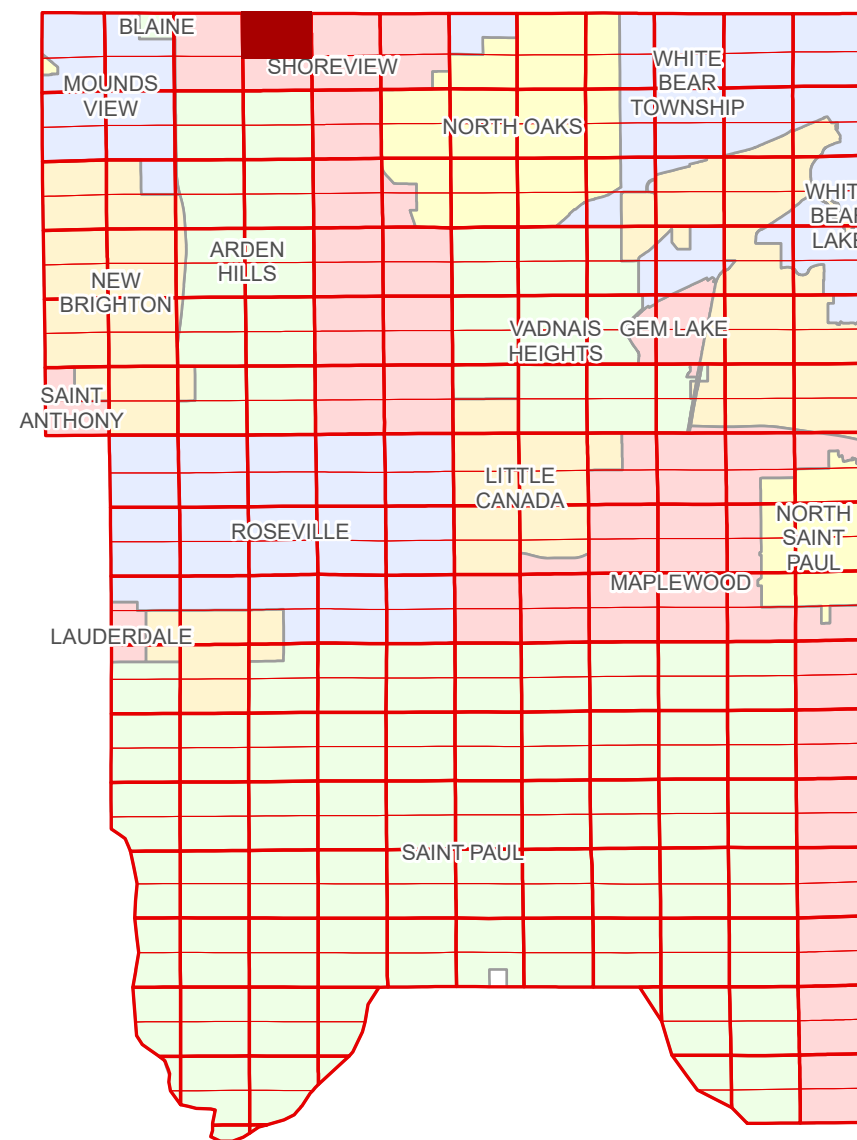


N Half  
Section 3  
T 30 N  
R 23 W

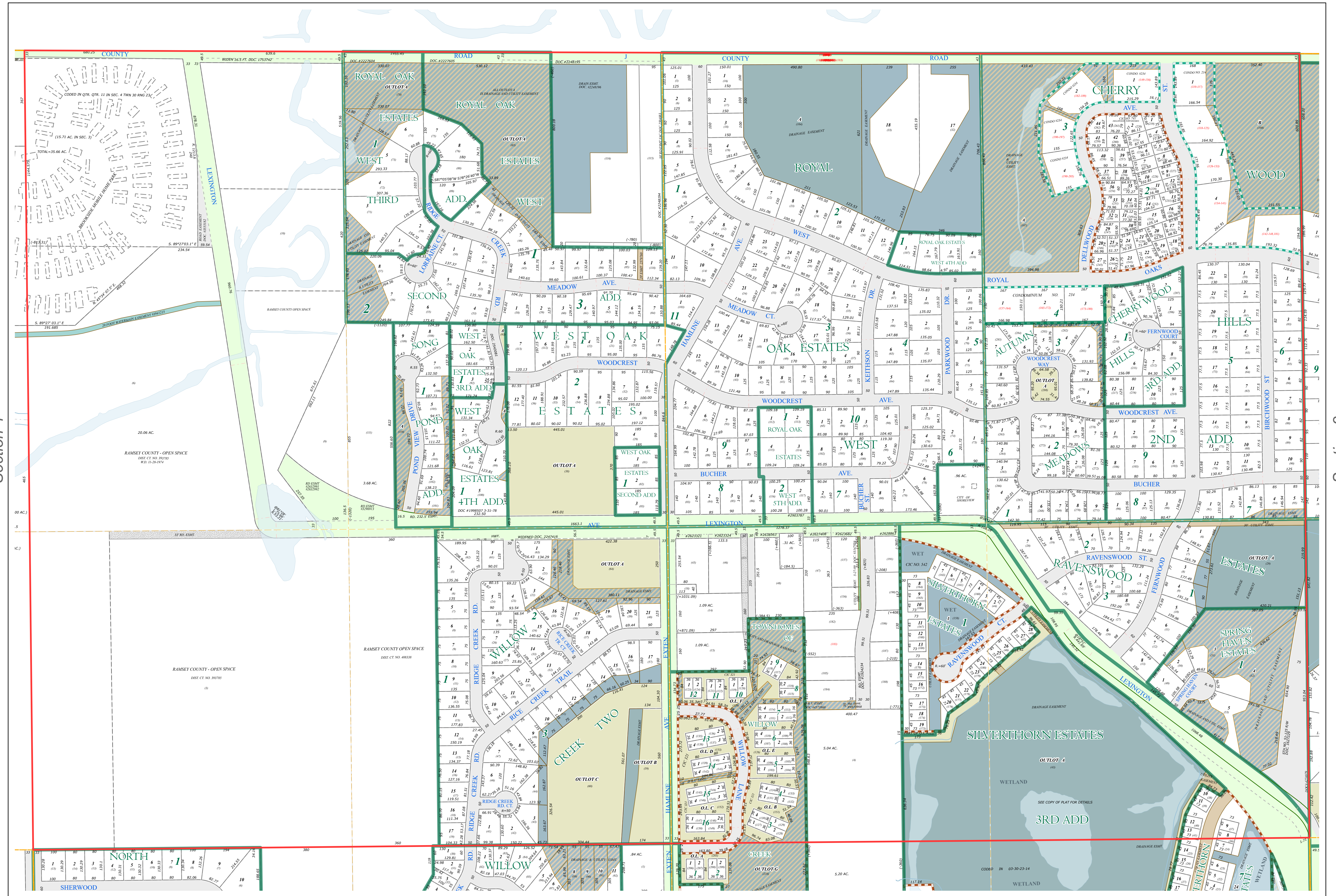
# Ramsey County Minnesota Parcel Map

Anoka County  
Section 0



Ramsey County  
Section 4

Ramsey County  
Section 2



Legend			
	Section		Metes & Bounds
	Quarter		Tax Parcel Type
	Quarter Quarter		Personal Property
	County Right of Way		Manufactured Home
	Municipal Right of Way		Real Property
Subdivision Type		Easement Type	
	Subdivision Plat		Utility, Storm & Sanitary Sewer
	Planned Community		Utility, Water
	Condominium		Utility, Unidentified
Division Type			Drainage & Utility
	Lot		Drainage
	Outlot		Misc Easements

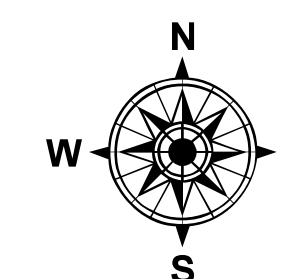
The information on this map is a compilation of Ramsey County Records. THE COUNTY DOES NOT WARRANT OR GUARANTEE THE ACCURACY OF THIS DATA. The County disclaims any liability for any injuries, time delays, or expenses you may suffer if you rely in any manner on the accuracy of this data.

Produced by Information Services Enterprise GIS Division  
RCGISMetaData@Co.Ramsey.MN.US

NOTE: This is not an official Ramsey County tax lot map. This is based on the data available in the Geographic Information System, which may vary from tax data officially recorded in the Tax System. For an official tax map, please contact the Office of Property Records and Revenue.

651-266-2000  
AskPropertyTaxandRecords@co.ramsey.mn.us

Section 3  
Ramsey County



0 4590 180 270 360  
Feet

1" = 200'  
1:2,400

N033023

1/3/2025