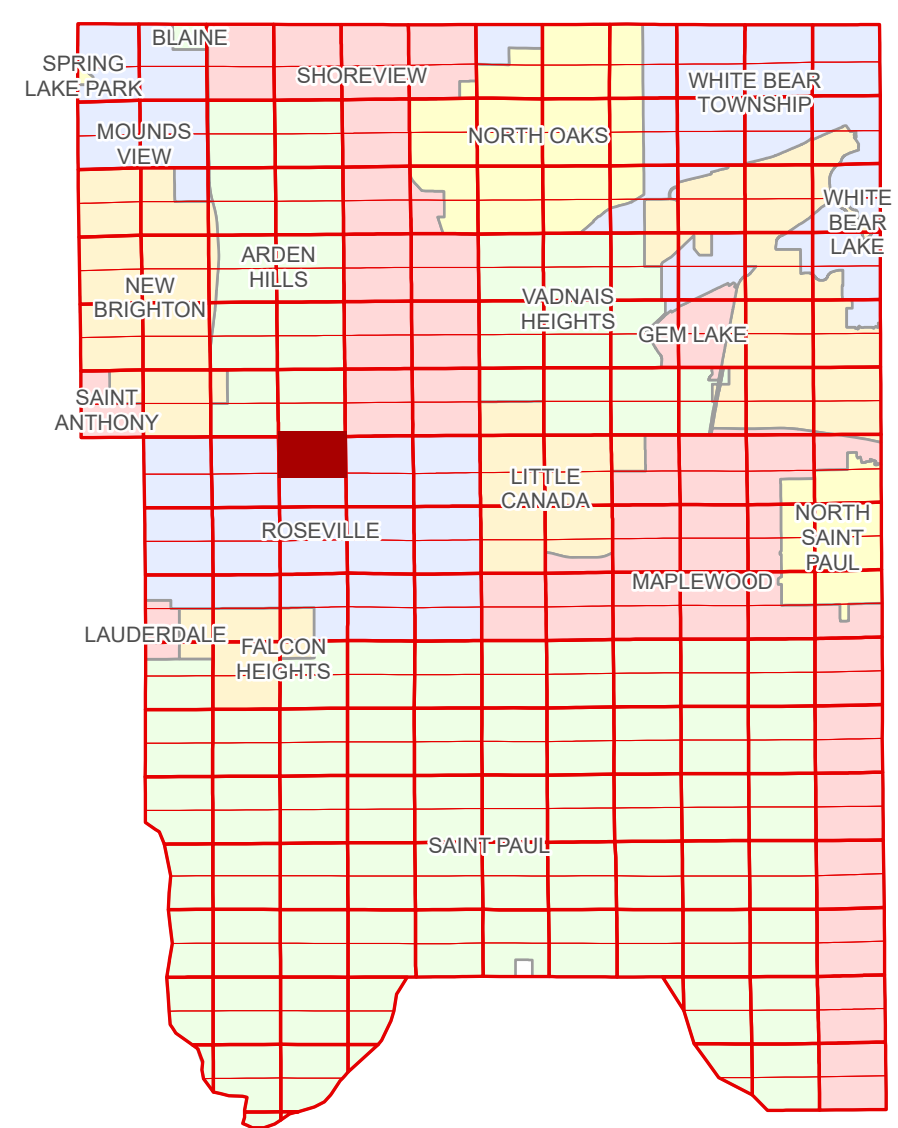


# Ramsey County Minnesota Parcel Map

Ramsey County  
Section 34

N Half  
Section 3  
T 29 N  
R 23 W



Ramsey County  
Section 4

Section 2  
Ramsey County

**Legend**

Section	Division Type
Quarter	Lot
Quarter Quarter	Metes & Bounds
State Right of Way	Tax Parcel Type
County Right of Way	Real Property
Municipal Right of Way	Easement Type
Subdivision Type	Private Driveway
Subdivision Plat	Utility, Storm & Sanitary Sewer
Registered Land Survey	Drainage & Utility
Condominium	Drainage
	Misc Easements

The information on this map is a compilation of Ramsey County Records. THE COUNTY DOES NOT WARRANT OR GUARANTEE THE ACCURACY OF THIS DATA. The County disclaims any liability for any injuries, time delays, or expenses you may suffer if you rely in any manner on the accuracy of this data.

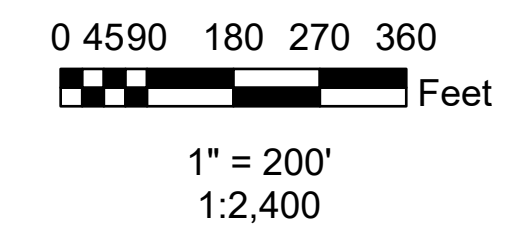
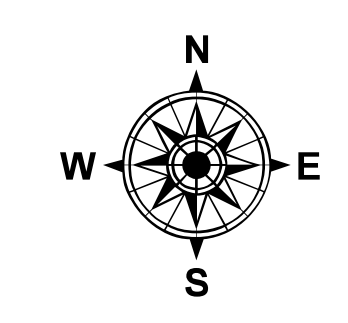
Produced by Information Services Enterprise GIS Division  
RCGISMetaData@Co.Ramsey.MN.US

NOTE: This is not an official Ramsey County tax lot map. This is based on the data available in the Geographic Information System, which may vary from tax data officially recorded in the Tax System. For an official tax map, please contact the Office of Property Records and Revenue.

651-266-2000  
AskPropertyTaxandRecords@co.ramsey.mn.us

Section 3  
Ramsey County

Aerial Imagery Date: March 11 - April 4, 2024



N032923

1/3/2025