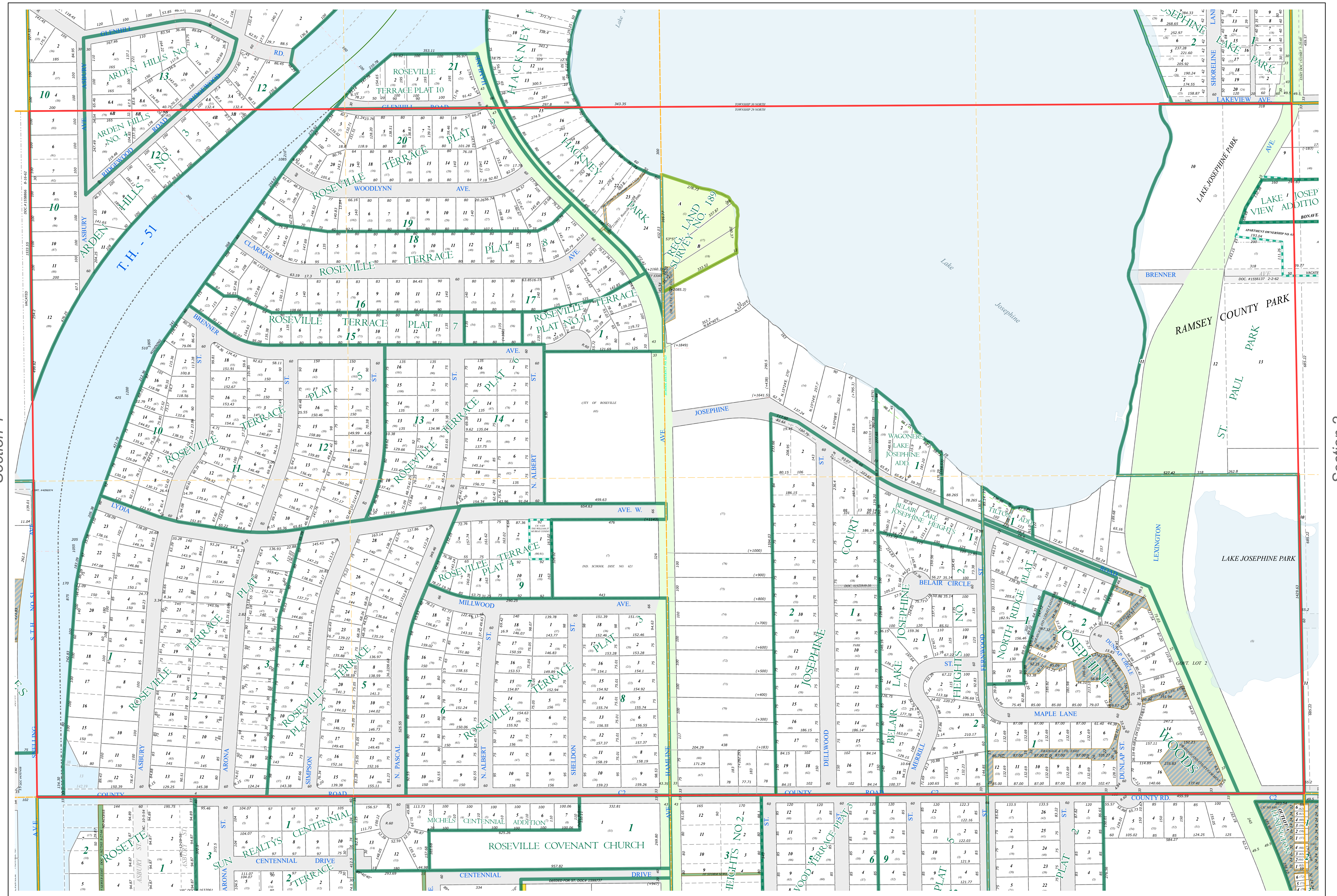
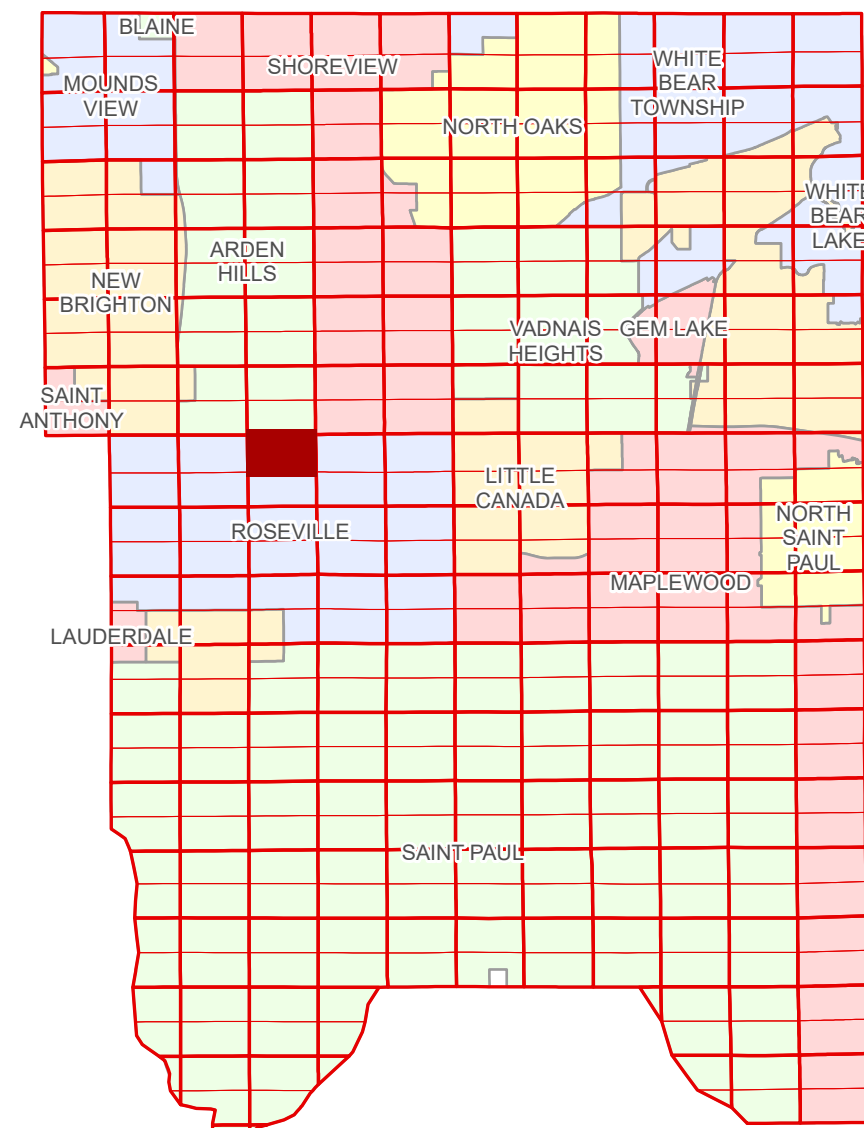


N Half
Section 3
T 29 N
R 23 W

Ramsey County Minnesota Parcel Map

Ramsey County
Section 34



Ramsey County
Section 4

Section 2
Ramsey County

Legend

Section	Division Type
Quarter	Lot
Quarter Quarter	Tract
State Right of Way	Metes & Bounds
County Right of Way	Tax Parcel Type
Municipal Right of Way	Real Property
Subdivision Type	Easement Type
Subdivision Plat	Private Driveway
Registered Land Survey	Utility, Storm & Sanitary Sewer
Condominium	Drainage & Utility
	Drainage
	Misc Easements

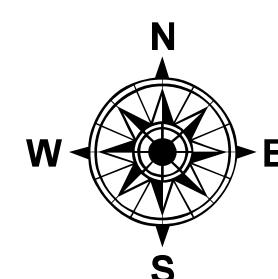
The information on this map is a compilation of Ramsey County Records. THE COUNTY DOES NOT WARRANT OR GUARANTEE THE ACCURACY OF THIS DATA. The County disclaims any liability for any injuries, time delays, or expenses you may suffer if you rely in any manner on the accuracy of this data.

NOTE: This is not an official Ramsey County tax lot map. This is based on the data available in the Geographic Information System, which may vary from tax data officially recorded in the Tax System. For an official tax map, please contact the Office of Property Records and Revenue.

Produced by Information Services Enterprise GIS Division
RCGISMetaData@Co.Ramsey.MN.US

651-266-2000
AskPropertyTaxandRecords@co.ramsey.mn.us

Section 3
Ramsey County



0 450 180 270 360
Feet

1" = 200'

1:2,400

N032923

1/3/2025