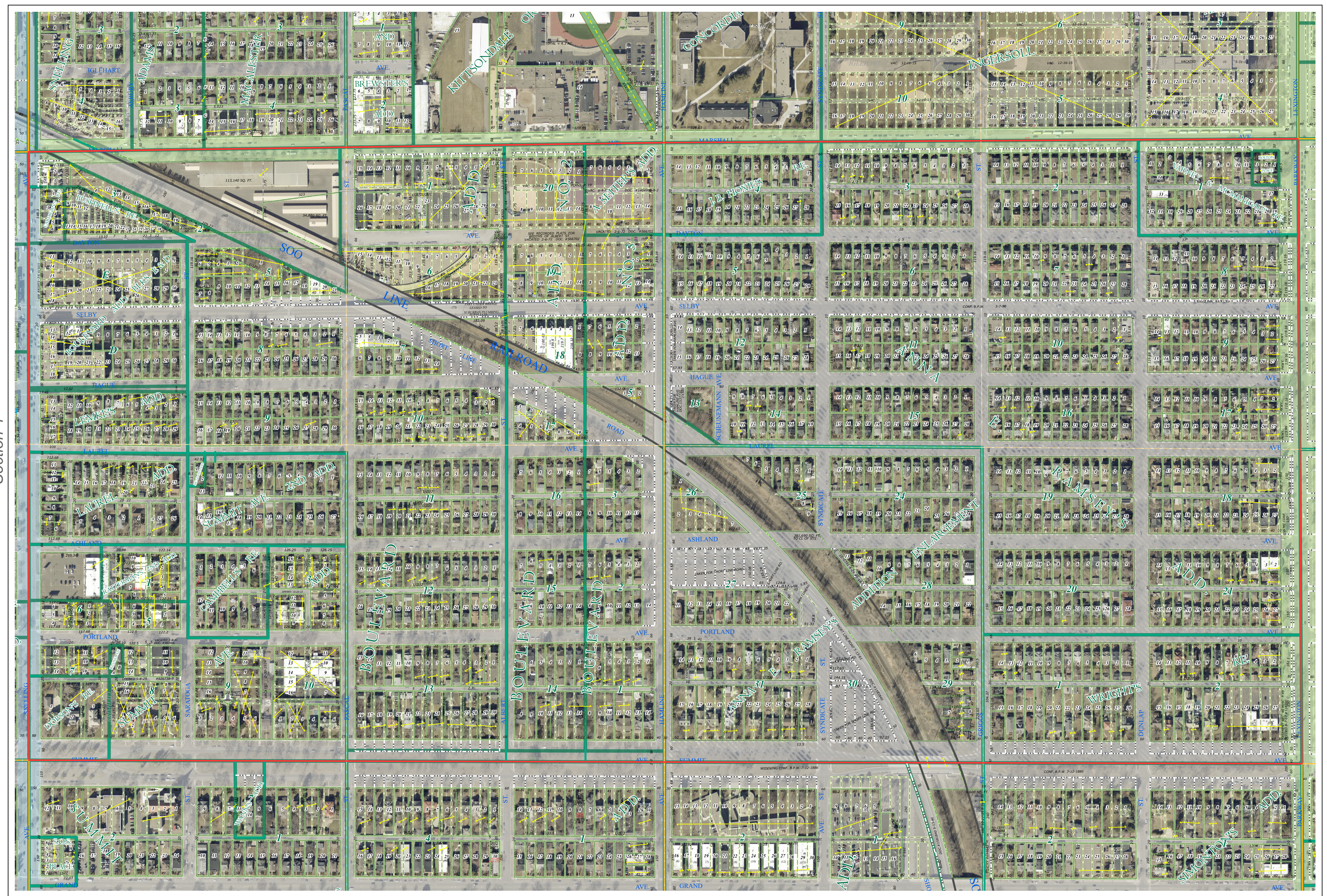
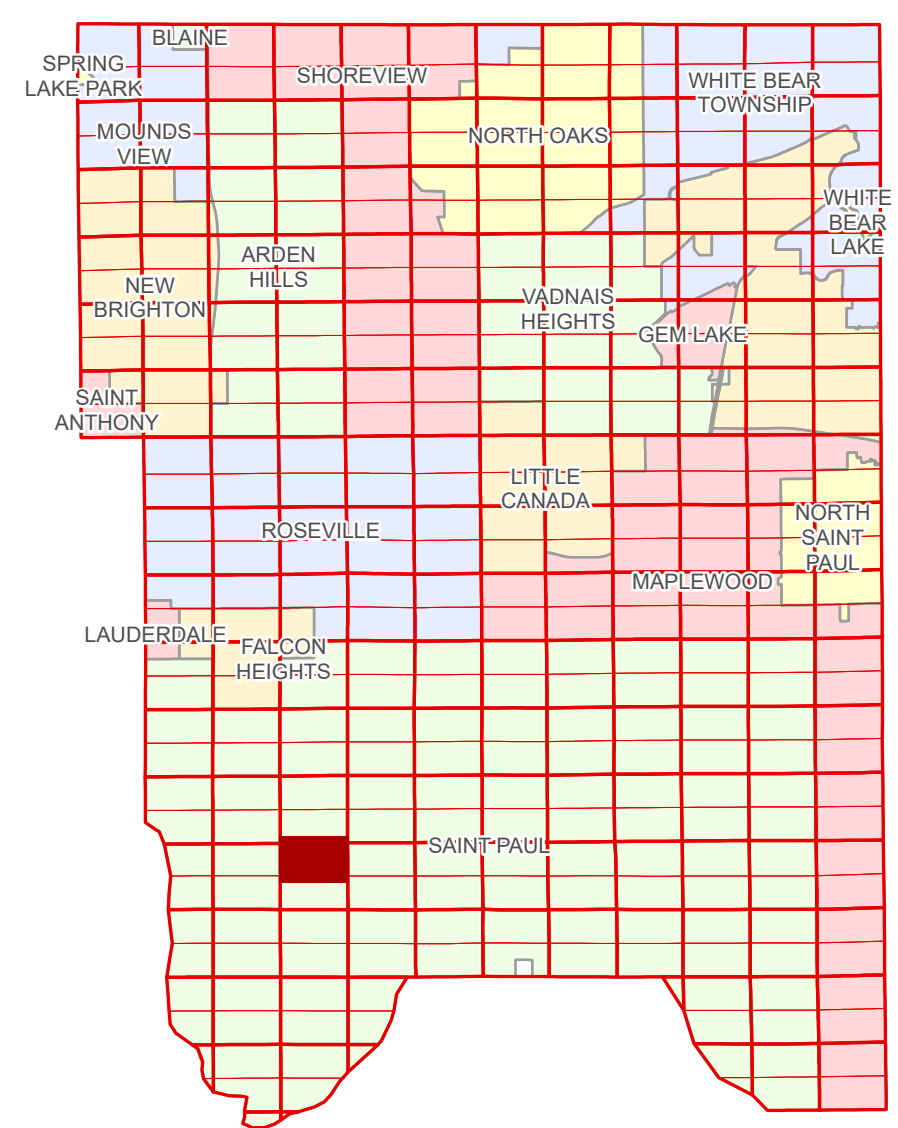


# Ramsey County Minnesota Parcel Map

N Half  
Section 3  
T 28 N  
R 23 W

Ramsey County  
Section 34



Ramsey County  
Section 4

Section 2  
Ramsey County

Legend			
	Section		Metes & Bounds
	Quarter		State Assessed Property
	Quarter Quarter		Real Property
	State Right of Way		Private Access
	County Right of Way		Private Driveway
	Municipal Right of Way		Public Right of Way
	Subdivision Type		Railroad
	Subdivision Plat		
	Registered Land Survey		
	Division Type		
	Lot		

The information on this map is a compilation of Ramsey County Records. THE COUNTY DOES NOT WARRANT OR GUARANTEE THE ACCURACY OF THIS DATA. The County disclaims any liability for any injuries, time delays, or expenses you may suffer if you rely in any manner on the accuracy of this data.

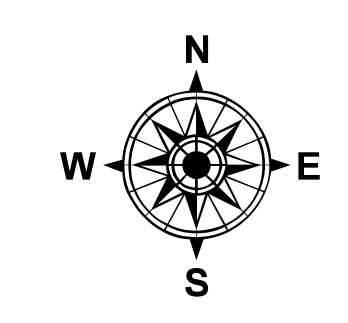
Produced by Information Services Enterprise GIS Division  
RCGISMetaData@Co.Ramsey.MN.US

NOTE: This is not an official Ramsey County tax lot map. This is based on the data available in the Geographic Information System, which may vary from tax data officially recorded in the Tax System. For an official tax map, please contact the Office of Property Records and Revenue.

651-266-2000  
AskPropertyTaxandRecords@co.ramsey.mn.us

Section 3  
Ramsey County

Aerial Imagery Date: March 11 - April 4, 2024



0 450 180 270 360 Feet  
1" = 200'  
1:2,400

N032823

1/3/2025