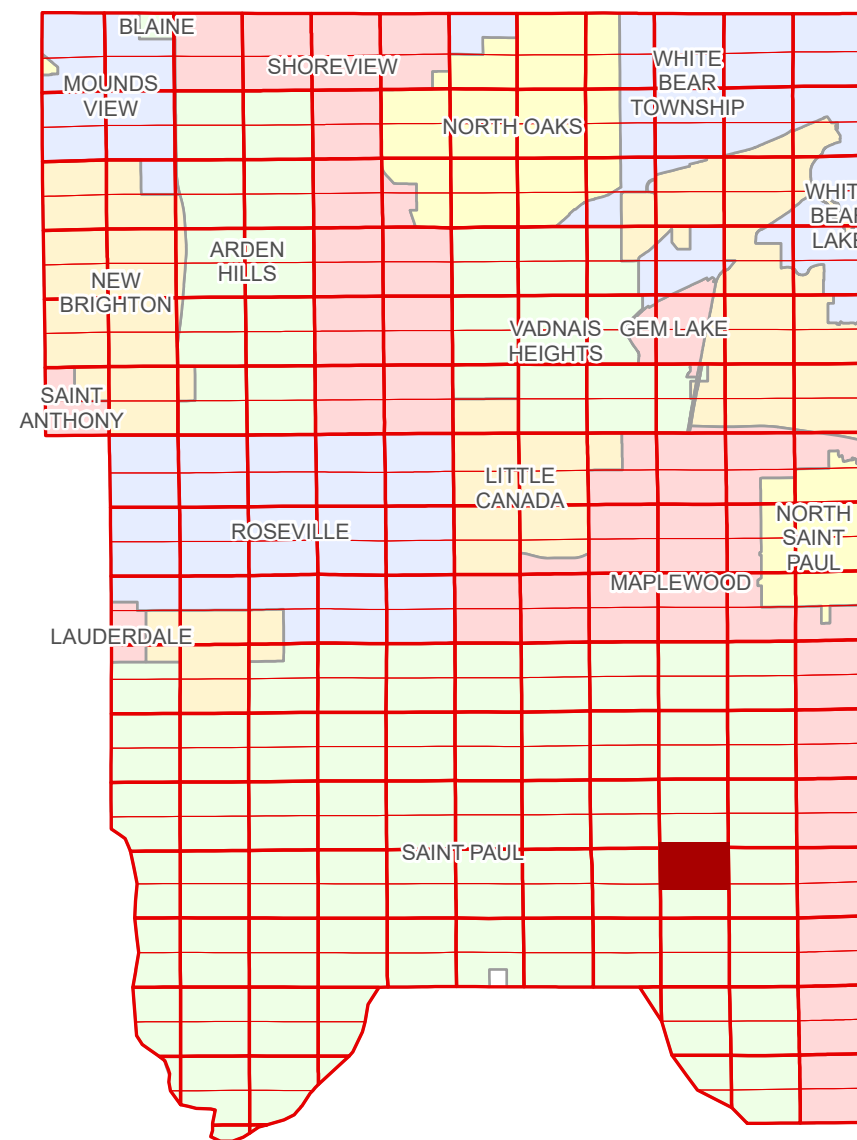


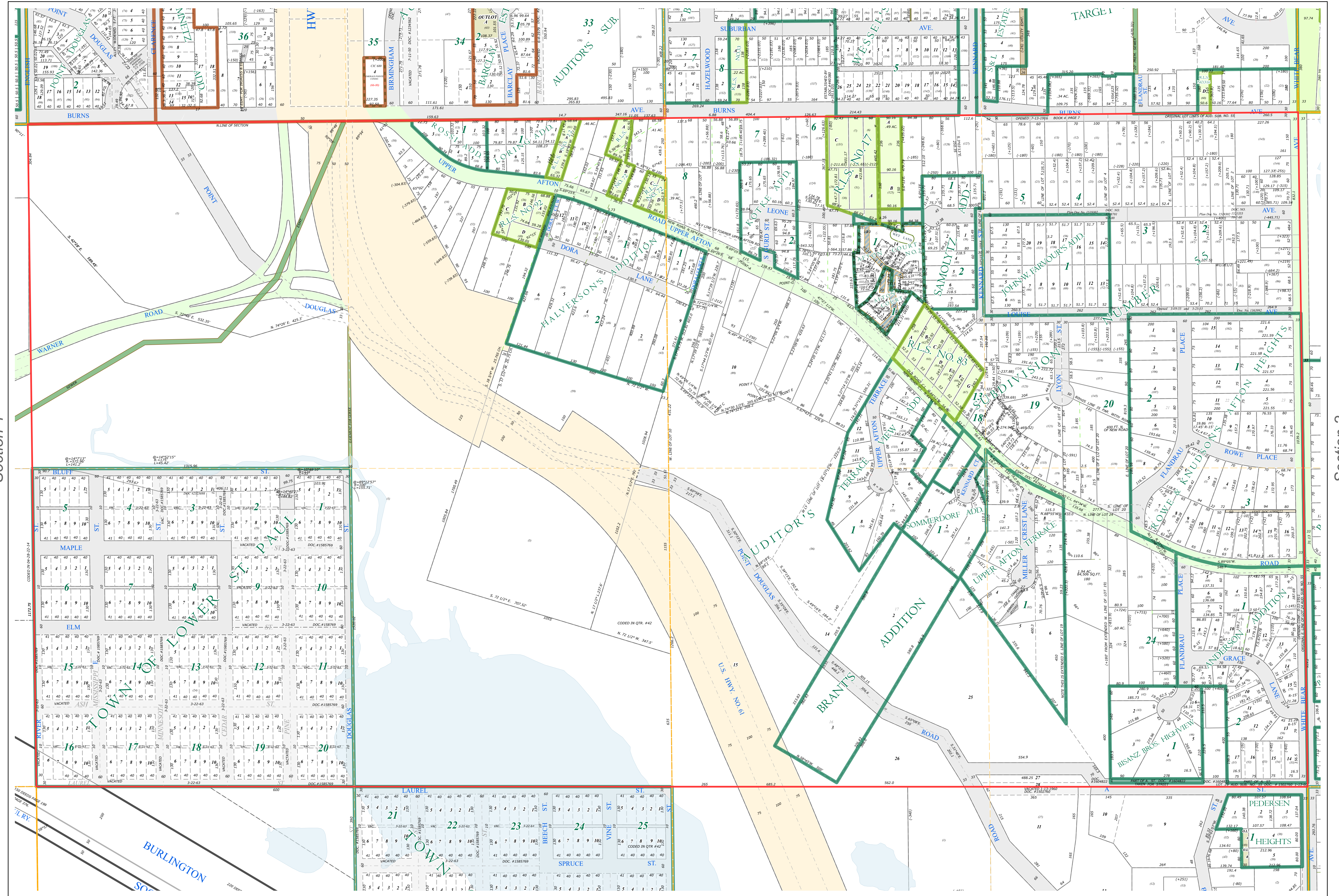
N Half  
Section 3  
T 28 N  
R 22 W

# Ramsey County Minnesota Parcel Map

Ramsey County  
Section 34



Ramsey County  
Section 4



Section 2  
Ramsey County

**Legend**

Section	Division Type
Quarter	Lot
Quarter Quarter	Tract
Federal Right of Way	Metes & Bounds
County Right of Way	<b>Tax Parcel Type</b>
Municipal Right of Way	State Assessed Property
<b>Subdivision Type</b>	Real Property
Subdivision Plat	<b>Easement Type</b>
Registered Land Survey	Private Access
Auditors's Subdivision	Private Driveway
Planned Community	Utility, Storm & Sanitary Sewer
	Drainage & Utility
	Misc Easements

The information on this map is a compilation of Ramsey County Records. THE COUNTY DOES NOT WARRANT OR GUARANTEE THE ACCURACY OF THIS DATA. The County disclaims any liability for any injuries, time delays, or expenses you may suffer if you rely in any manner on the accuracy of this data.

Produced by Information Services Enterprise GIS Division  
RCGISMetaData@Co.Ramsey.MN.US

NOTE: This is not an official Ramsey County tax lot map. This is based on the data available in the Geographic Information System, which may vary from tax data officially recorded in the Tax System. For an official tax map, please contact the Office of Property Records and Revenue.

651-266-2000  
AskPropertyTaxandRecords@co.ramsey.mn.us

Section 3  
Ramsey County



0 4590 180 270 360 Feet

1" = 200'  
1:2400

N  
W E  
S

**N032822**

1/3/2025