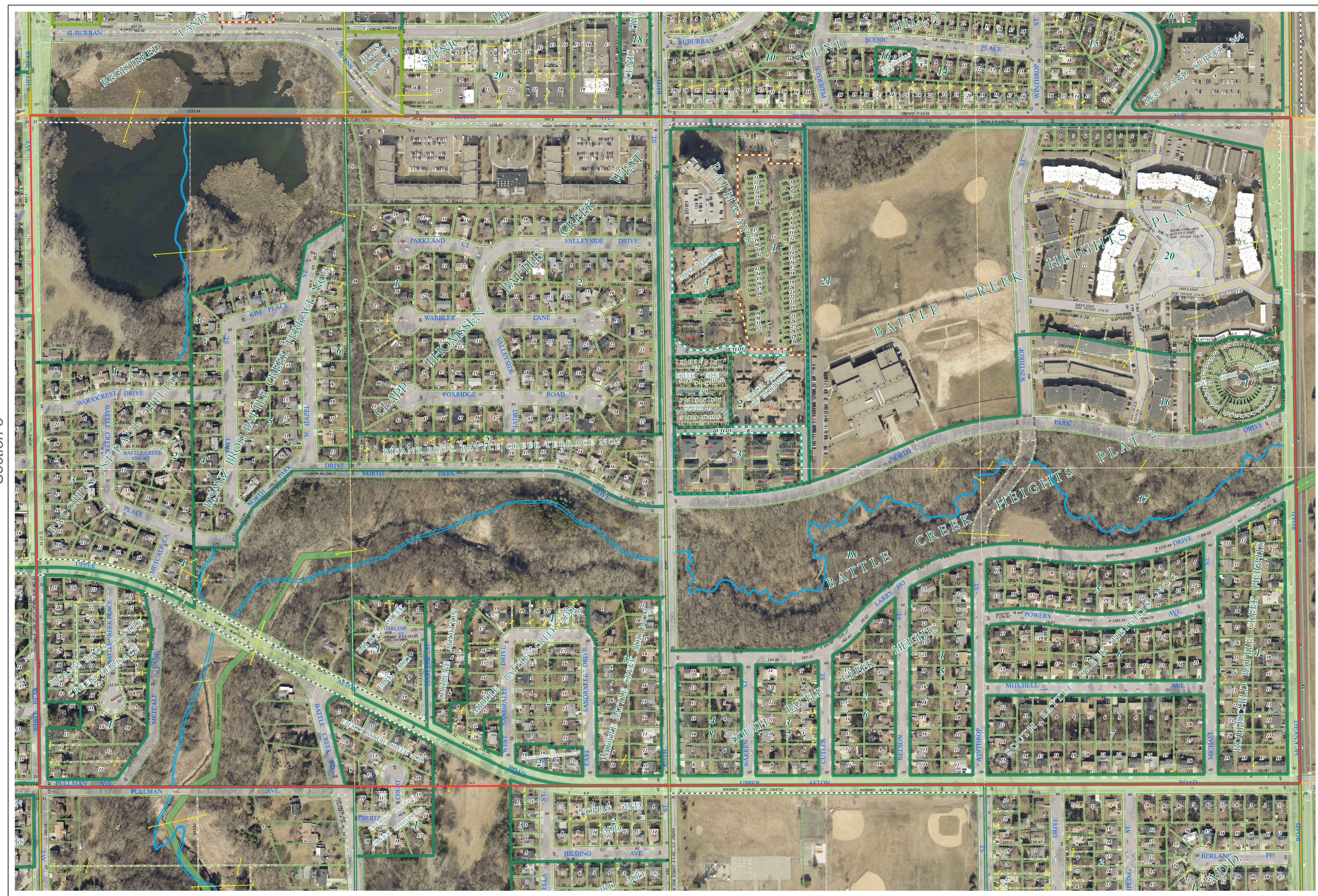
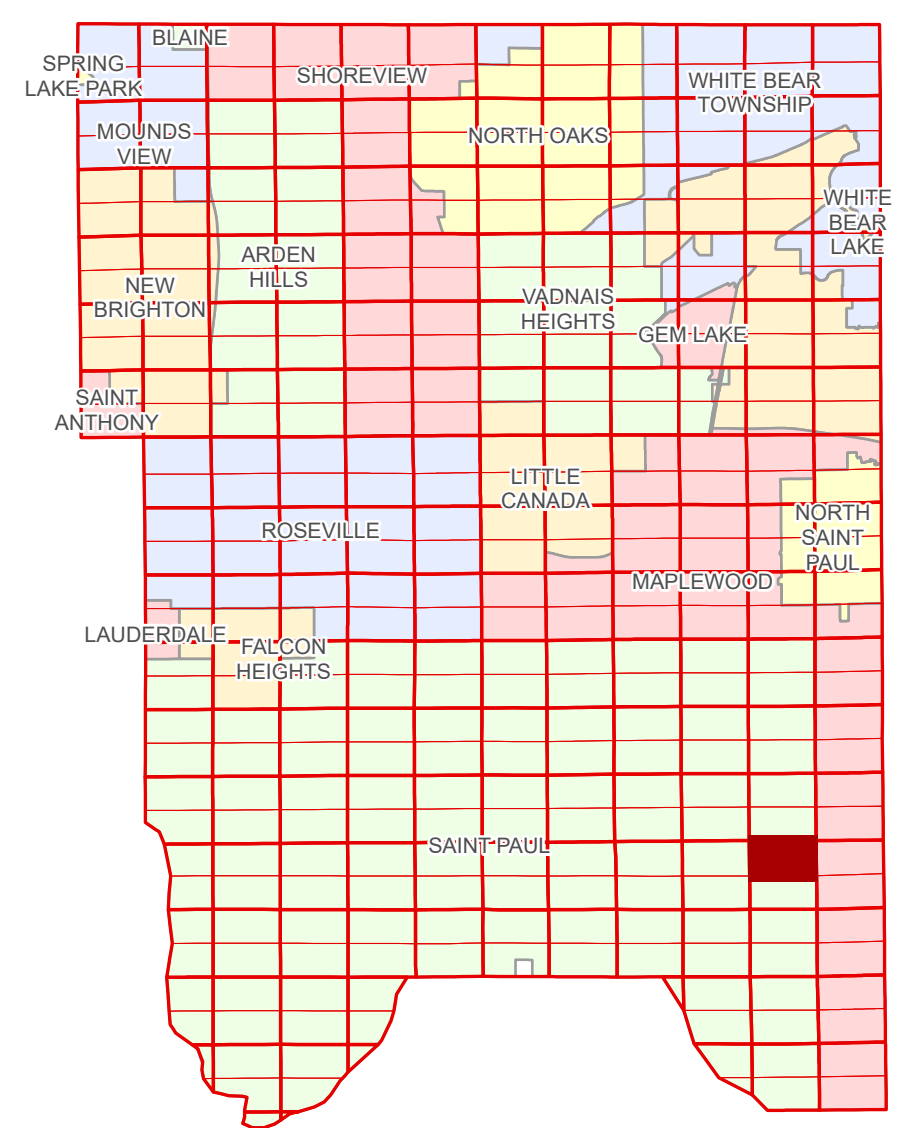


Ramsey County Minnesota Parcel Map

N Half
Section 2
T 28 N
R 22 W

Ramsey County
Section 35



Ramsey County
Section 3

Section 1
Ramsey County

Legend

Section	Division Type
Quarter	Lot
Quarter Quarter	Metes & Bounds
Federal Right of Way	Tax Parcel Type
County Right of Way	Real Property
Municipal Right of Way	Easement Type
Subdivision Type	Private Driveway
Subdivision Plat	Utility, Storm & Sanitary Sewer
Registered Land Survey	Utility, Unidentified
Planned Community	Drainage & Utility
Condominium	Drainage
	Misc Easements

Aerial Imagery Date: March 11 - April 4, 2024



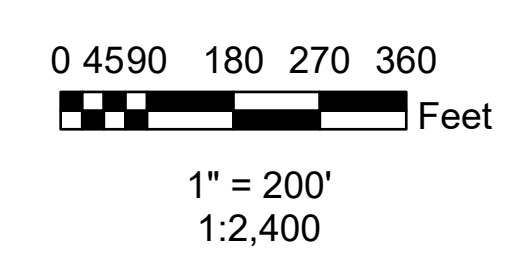
The information on this map is a compilation of Ramsey County Records. THE COUNTY DOES NOT WARRANT OR GUARANTEE THE ACCURACY OF THIS DATA. The County disclaims any liability for any injuries, time delays, or expenses you may suffer if you rely in any manner on the accuracy of this data.

NOTE: This is not an official Ramsey County tax lot map. This is based on the data available in the Geographic Information System, which may vary from tax data officially recorded in the Tax System. For an official tax map, please contact the Office of Property Records and Revenue.

Produced by Information Services Enterprise GIS Division
RCGISMetaData@Co.Ramsey.MN.US

651-266-2000
AskPropertyTaxandRecords@co.ramsey.mn.us

Section 2
Ramsey County



N022822

1/3/2025