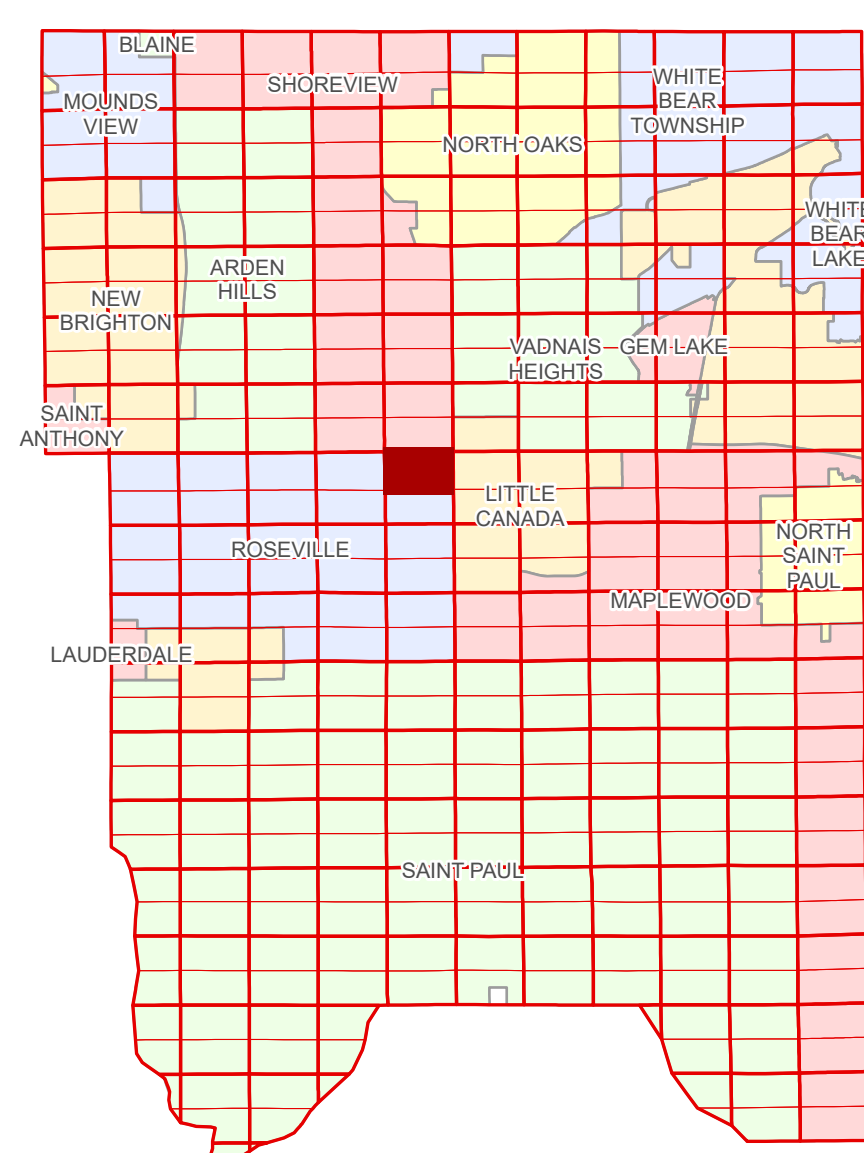


Ramsey County Minnesota Parcel Map

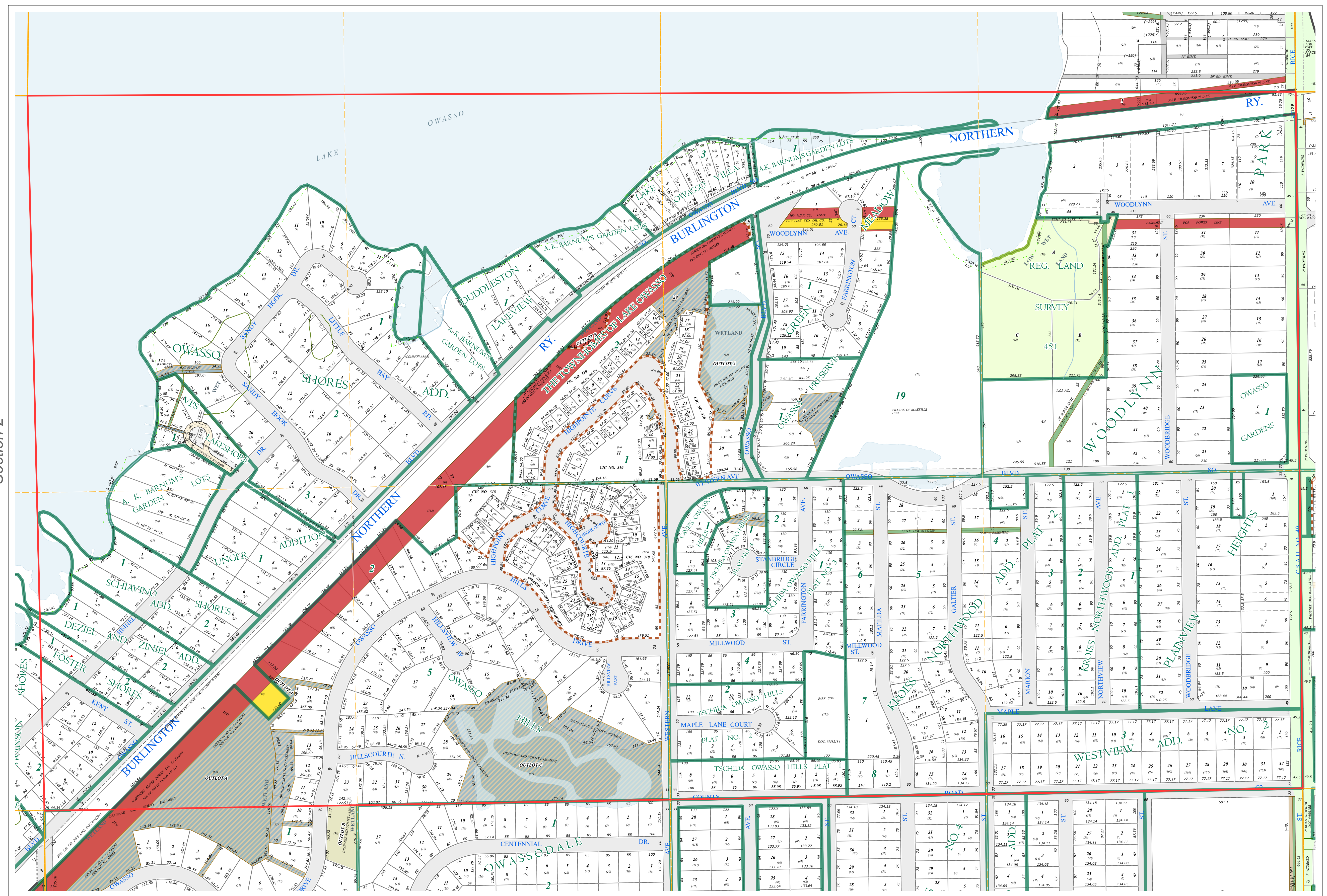
Ramsey County
Section 36

N Half
Section 1
T 29 N
R 23 W



Ramsey County
Section 2

Ramsey County
Section 6



Legend

Section	Metes & Bounds
Quarter	Tax Parcel Type
Quarter Quarter	State Assessed Property
County Right of Way	Real Property
Municipal Right of Way	Easement Type
Subdivision Type	Private Access
Subdivision Plat	Utility, Electric
Registered Land Survey	Utility, Gas & Oil
Planned Community	Utility, Storm & Sanitary Sewer
Division Type	Drainage & Utility
Lot	Drainage
Outlot	
Tract	

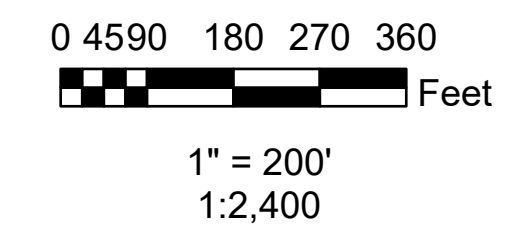
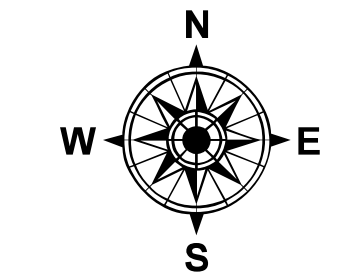
The information on this map is a compilation of Ramsey County Records. THE COUNTY DOES NOT WARRANT OR GUARANTEE THE ACCURACY OF THIS DATA. The County disclaims any liability for any injuries, time delays, or expenses you may suffer if you rely in any manner on the accuracy of this data.

Produced by Information Services Enterprise GIS Division
RCGSMetaData@Co.Ramsey.MN.US

NOTE: This is not an official Ramsey County tax lot map. This is based on the data available in the Geographic Information System, which may vary from tax data officially recorded in the Tax System. For an official tax map, please contact the Office of Property Records and Revenue.

651-266-2000
AskPropertyTaxandRecords@co.ramsey.mn.us

Section 1
Ramsey County



N012923
1/3/2025