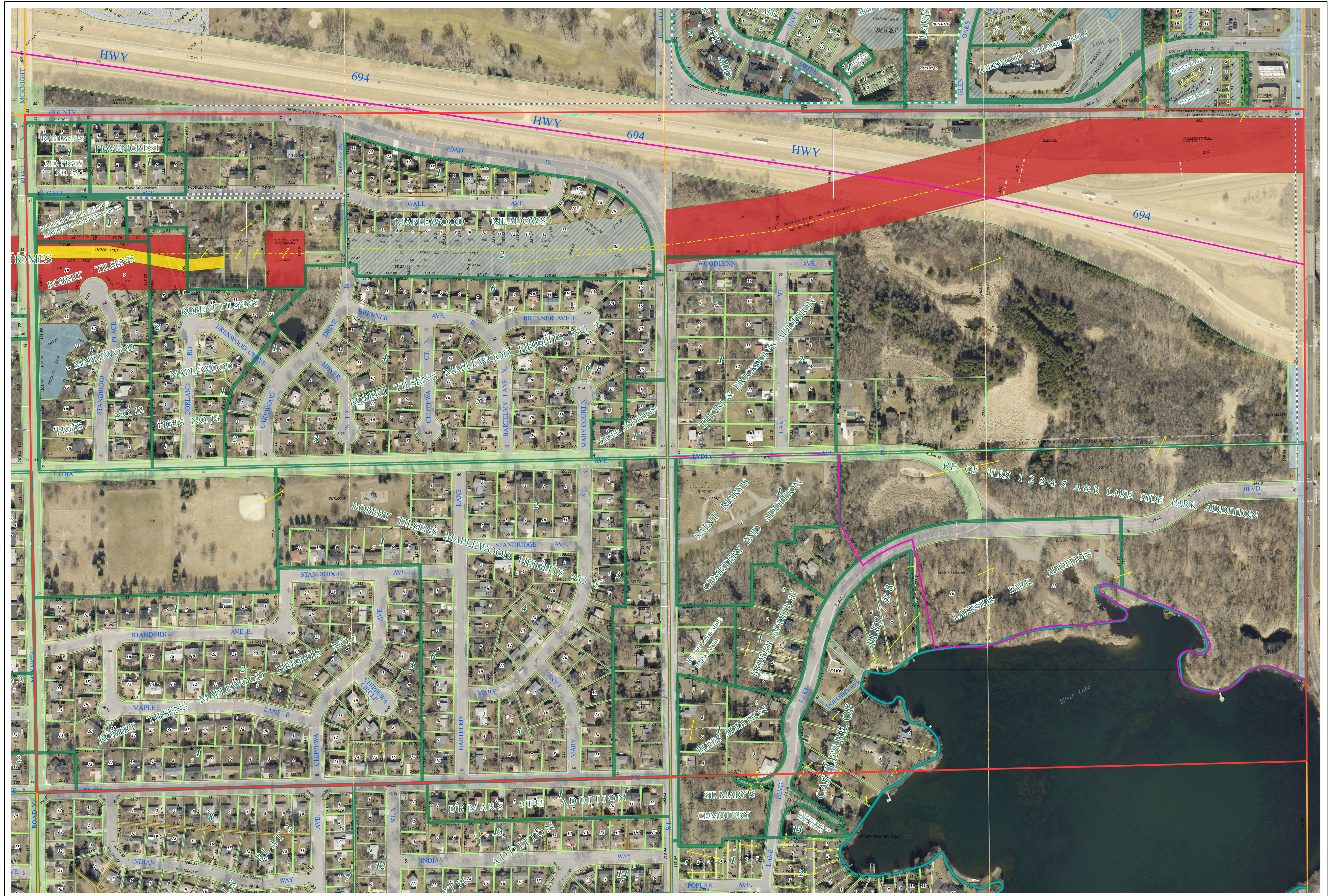
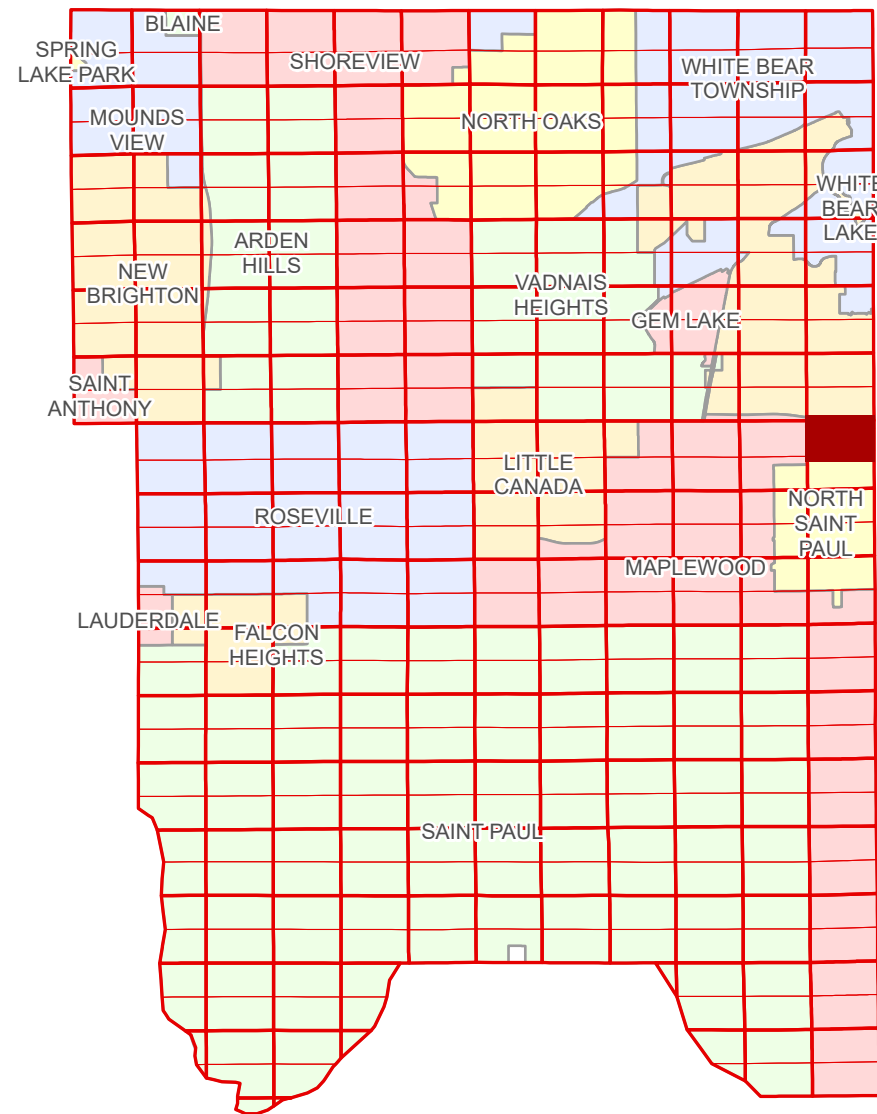


Ramsey County Minnesota Parcel Map

Ramsey County
Section 36

N Half
Section 1
T 29 N
R 22 W



Ramsey County
Section 2

Section 6
Washington County

Legend

Section	Metes & Bounds
Quarter	Real Property
Quarter Quarter	Easement Type
Federal Right of Way	Ponding
State Right of Way	Utility, Electric
County Right of Way	Utility, Gas & Oil
Municipal Right of Way	Utility, Storm & Sanitary Sewer
Subdivision Type	Utility, Unidentified
Subdivision Plat	Drainage & Utility
Planned Community	Drainage
Division Type	
Lot	

The information on this map is a compilation of Ramsey County Records. THE COUNTY DOES NOT WARRANT OR GUARANTEE THE ACCURACY OF THIS DATA. The County disclaims any liability for any injuries, time delays, or expenses you may suffer if you rely in any manner on the accuracy of this data.

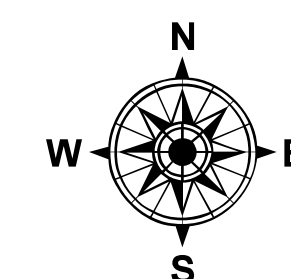
Produced by Information Services Enterprise GIS Division
RCGISMetaData@Co.Ramsey.MN.US

NOTE: This is not an official Ramsey County tax lot map. This is based on the data available in the Geographic Information System, which may vary from tax data officially recorded in the Tax System. For an official tax map, please contact the Office of Property Records and Revenue.

651-266-2000
AskPropertyTaxandRecords@co.ramsey.mn.us

Section 1
Ramsey County

Aerial Imagery Date: March 11 - April 4, 2024



0 4590 180 270 360 Feet

1" = 200'

1:2,400

N012922

1/3/2025